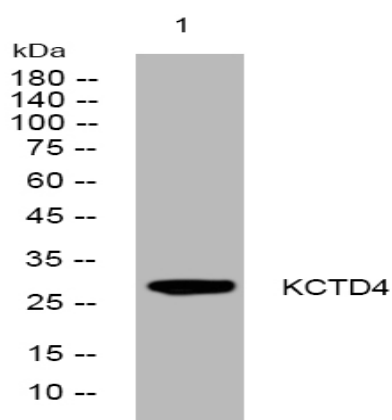


KCTD4 rabbit pAb

Catalog No :	YT7701
Reactivity :	Human;Mouse
Applications :	WB
Target :	KCTD4
Gene Name :	KCTD4
Protein Name :	KCTD4
Human Gene Id :	386618
Human Swiss Prot No :	Q8WVF5
Mouse Gene Id :	67516
Mouse Swiss Prot No :	Q9D7X1
Immunogen :	Synthesized peptide derived from human KCTD4 AA range: 66-116
Specificity :	This antibody detects endogenous levels of KCTD4 at Human/Mouse
Formulation :	Liquid in PBS containing 50% glycerol, 0.5% BSA and 0.02% sodium azide.
Source :	Polyclonal, Rabbit,IgG
Dilution :	WB 1:500-2000
Purification :	The antibody was affinity-purified from rabbit antiserum by affinity-chromatography using epitope-specific immunogen.
Concentration :	1 mg/ml
Storage Stability :	-15°C to -25°C/1 year(Do not lower than -25°C)

Molecularweight :	28kD
Function :	similarity:Contains 1 BTB (POZ) domain.,
Sort :	8872
No4 :	1
Host :	Rabbit
Modifications :	Unmodified

Products Images



Western blot analysis of lysates from MCF-7 cells, primary antibody was diluted at 1:1000, 4° over night