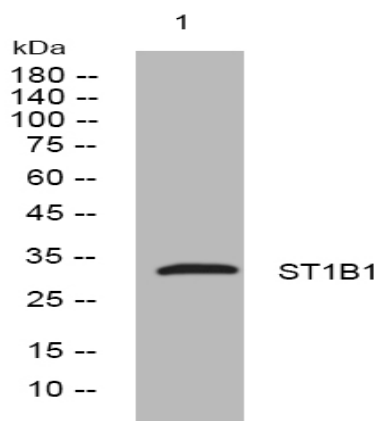


## ST1B1 rabbit pAb

<b>Catalog No :</b>	YT7699
<b>Reactivity :</b>	Human;Mouse;Rat
<b>Applications :</b>	WB
<b>Target :</b>	ST1B1
<b>Gene Name :</b>	SULT1B1 ST1B2 SULT1B2
<b>Protein Name :</b>	ST1B1
<b>Human Gene Id :</b>	27284
<b>Human Swiss Prot No :</b>	O43704
<b>Mouse Gene Id :</b>	56362
<b>Mouse Swiss Prot No :</b>	Q9QWG7
<b>Rat Gene Id :</b>	64305
<b>Rat Swiss Prot No :</b>	P52847
<b>Immunogen :</b>	Synthesized peptide derived from human ST1B1 AA range: 223-273
<b>Specificity :</b>	This antibody detects endogenous levels of ST1B1 at Human/Mouse/Rat
<b>Formulation :</b>	Liquid in PBS containing 50% glycerol, 0.5% BSA and 0.02% sodium azide.
<b>Source :</b>	Polyclonal, Rabbit,IgG
<b>Dilution :</b>	WB 1:500-2000
<b>Purification :</b>	The antibody was affinity-purified from rabbit antiserum by affinity-chromatography using epitope-specific immunogen.

<b>Concentration :</b>	1 mg/ml
<b>Storage Stability :</b>	-15°C to -25°C/1 year(Do not lower than -25°C)
<b>Molecularweight :</b>	33kD
<b>Background :</b>	<p>Sulfotransferase enzymes catalyze the sulfate conjugation of many hormones, neurotransmitters, drugs, and xenobiotic compounds. These cytosolic enzymes are different in their tissue distributions and substrate specificities. The gene structure (number and length of exons) is similar among family members. However, the total genomic length of this gene is greater than that of other SULT1 genes. [provided by RefSeq, Jul 2008],</p>
<b>Function :</b>	<p>function:Catalyzes the sulfate conjugation of many hormones, neurotransmitters, drugs and xenobiotic compounds. Sulfonation increases the water solubility of most compounds, and therefore their renal excretion, but it can also result in bioactivation to form active metabolites. Sulfates dopamine, small phenols such as 1-naphthol and p-nitrophenol and thyroid hormones, including 3,3'-diiodothyronine, triiodothyronine, reverse triiodothyronine and thyroxine.,similarity:Belongs to the sulfotransferase 1 family.,subunit:Monomer.,tissue specificity:Highly expressed in the liver, peripheral blood leukocytes, colon (mucosal lining), small intestine (jejunum) and spleen. A lesser expression was observed in the lung, placenta and thymus.,</p>
<b>Subcellular Location :</b>	Cytoplasm .
<b>Expression :</b>	Highly expressed in the liver, peripheral blood leukocytes, colon (mucosal lining), small intestine (jejunum) and spleen. A lesser expression was observed in the lung, placenta and thymus.
<b>Sort :</b>	16644
<b>No4 :</b>	1
<b>Host :</b>	Rabbit
<b>Modifications :</b>	Unmodified

## Products Images



Western blot analysis of lysates from PC-12 cells, primary antibody was diluted at 1:1000, 4° over night