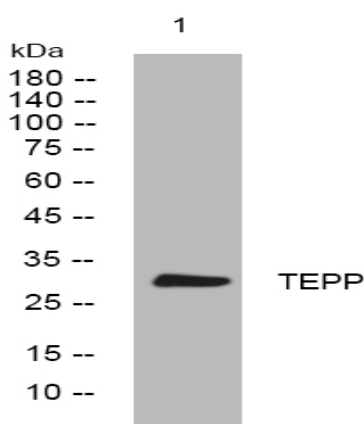


TEPP rabbit pAb

Catalog No :	YT7693
Reactivity :	Human;Mouse;Rat
Applications :	WB
Target :	TEPP
Gene Name :	TEPP
Protein Name :	TEPP
Human Gene Id :	374739
Human Swiss Prot No :	Q6URK8
Mouse Gene Id :	73407
Mouse Swiss Prot No :	Q6IMH0
Rat Gene Id :	291850
Rat Swiss Prot No :	Q6IMG9
Immunogen :	Synthesized peptide derived from human TEPP AA range: 24-74
Specificity :	This antibody detects endogenous levels of TEPP at Human/Mouse/Rat
Formulation :	Liquid in PBS containing 50% glycerol, 0.5% BSA and 0.02% sodium azide.
Source :	Polyclonal, Rabbit,IgG
Dilution :	WB 1:500-2000
Purification :	The antibody was affinity-purified from rabbit antiserum by affinity-chromatography using epitope-specific immunogen.

Concentration :	1 mg/ml
Storage Stability :	-15°C to -25°C/1 year(Do not lower than -25°C)
Molecularweight :	30kD
Function :	tissue specificity:Expressed in testis, prostate and placenta.,
Subcellular Location :	Secreted .
Expression :	Expressed in testis, prostate and placenta.
Sort :	17040
No4 :	1
Host :	Rabbit
Modifications :	Unmodified

Products Images



Western blot analysis of lysates from HEK293 cells, primary antibody was diluted at 1:1000, 4° over night