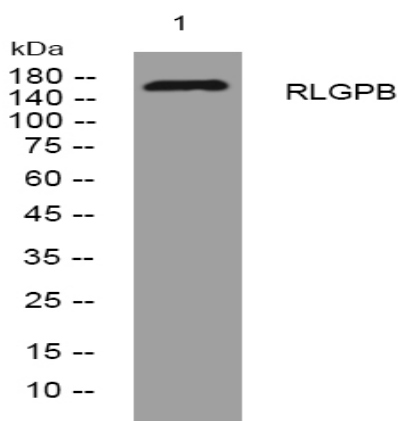


RLGPB rabbit pAb

Catalog No :	YT7687
Reactivity :	Human;Mouse;Rat
Applications :	WB
Target :	RLGPB
Fields :	>>Ras signaling pathway
Gene Name :	RALGAPB KIAA1219
Protein Name :	RLGPB
Human Gene Id :	57148
Human Swiss Prot No :	Q86X10
Mouse Gene Id :	228850
Mouse Swiss Prot No :	Q8BQZ4
Rat Swiss Prot No :	P86410
Immunogen :	Synthesized peptide derived from human RLGPB AA range: 1435-1485
Specificity :	This antibody detects endogenous levels of RLGPB at Human/Mouse/Rat
Formulation :	Liquid in PBS containing 50% glycerol, 0.5% BSA and 0.02% sodium azide.
Source :	Polyclonal, Rabbit,IgG
Dilution :	WB 1:500-2000
Purification :	The antibody was affinity-purified from rabbit antiserum by affinity-chromatography using epitope-specific immunogen.

Concentration :	<u>1 mg/ml</u>
Storage Stability :	<u>-15°C to -25°C/1 year(Do not lower than -25°C)</u>
Molecularweight :	<u>164kD</u>
Expression :	<u>Highly expressed in brain, mostly in amygdala.</u>
Sort :	<u>14538</u>
No4 :	<u>1</u>
Host :	<u>Rabbit</u>
Modifications :	<u>Unmodified</u>

Products Images



Western blot analysis of lysates from HuvEc cells, primary antibody was diluted at 1:1000, 4° over night