

MPP2 rabbit pAb

Catalog No :	YT7685
Reactivity :	Human;Mouse
Applications :	WB;IHC
Target :	MPP2
Gene Name :	MPP2 DLG2
Protein Name :	MPP2
Human Gene Id :	4355
Human Swiss Prot No :	Q14168
Mouse Gene Id :	50997
Mouse Swiss Prot No :	Q9WV34
Immunogen :	Synthesized peptide derived from human MPP2 AA range: 439-489
Specificity :	This antibody detects endogenous levels of MPP2 at Human/Mouse
Formulation :	Liquid in PBS containing 50% glycerol, 0.5% BSA and 0.02% sodium azide.
Source :	Polyclonal, Rabbit,IgG
Dilution :	WB 1:500-2000;IHC 1:50-300
Purification :	The antibody was affinity-purified from rabbit antiserum by affinity-chromatography using epitope-specific immunogen.
Concentration :	1 mg/ml
Storage Stability :	-15°C to -25°C/1 year(Do not lower than -25°C)

Molecularweight : 63kD

Background : Palmitoylated membrane protein 2 is a member of a family of membrane-associated proteins termed MAGUKs (membrane-associated guanylate kinase homologs). MAGUKs interact with the cytoskeleton and regulate cell proliferation, signaling pathways, and intracellular junctions. Palmitoylated membrane protein 2 contains a conserved sequence, called the SH3 (src homology 3) motif, found in several other proteins that associate with the cytoskeleton and are suspected to play important roles in signal transduction. [provided by RefSeq, Jul 2008],

Function : similarity:Belongs to the MAGUK family.,similarity:Contains 1 guanylate kinase-like domain.,similarity:Contains 1 PDZ (DHR) domain.,similarity:Contains 1 SH3 domain.,similarity:Contains 2 L27 domains.,

Subcellular Location : Cytoplasm, cytoskeleton . Membrane . Cell projection, dendrite . Cell junction, synapse, postsynaptic density . Prominently expressed in the postsynaptic densities of dendritic spines, is also detected in dendritic shafts. .

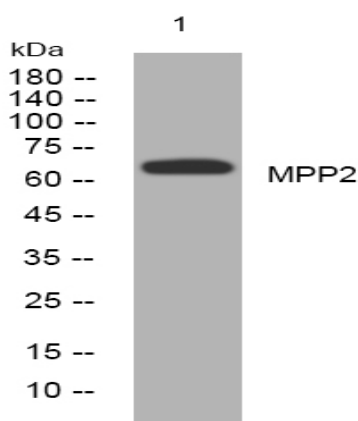
Sort : 10194

No4 : 1

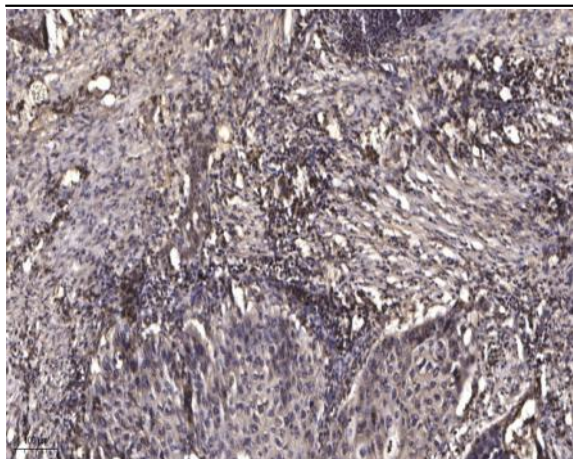
Host : Rabbit

Modifications : Unmodified

Products Images



Western blot analysis of lysates from SH-SY5Y cells, primary antibody was diluted at 1:1000, 4° over night



Immunohistochemical analysis of paraffin-embedded human Squamous cell carcinoma of lung. 1, Antibody was diluted at 1:200(4° overnight). 2, Tris-EDTA,pH9.0 was used for antigen retrieval. 3,Secondary antibody was diluted at 1:200(room temperature, 45min).