

ARL16 rabbit pAb

Catalog No :	YT7683
Reactivity :	Human
Applications :	WB
Target :	ARL16
Gene Name :	ARL16
Protein Name :	ARL16
Human Gene Id :	339231
Human Swiss Prot No :	Q0P5N6
Immunogen :	Synthesized peptide derived from human ARL16 AA range: 96-146
Specificity :	This antibody detects endogenous levels of ARL16 at Human
Formulation :	Liquid in PBS containing 50% glycerol, 0.5% BSA and 0.02% sodium azide.
Source :	Polyclonal, Rabbit,IgG
Dilution :	WB 1:500-2000
Purification :	The antibody was affinity-purified from rabbit antiserum by affinity-chromatography using epitope-specific immunogen.
Concentration :	1 mg/ml
Storage Stability :	-15°C to -25°C/1 year(Do not lower than -25°C)
Molecularweight :	22kD
Background :	The protein encoded by this gene belongs to the ARL (ADP-ribosylation factor-like) family of proteins, which are structurally related to ADP-ribosylation factors (ARFs). This protein has been shown to have an inhibitory role in the cellular

antiviral response. This gene product interacts with the C-terminal domain of the DEXD/H-box helicase 58 (DDX58) gene product. This interaction was found to suppress the association between the DDX58 gene product and RNA, thereby negatively regulating the activity of the DDX58 gene product. [provided by RefSeq, Jul 2016],

Function :

similarity:Belongs to the small GTPase superfamily. Arf family.,

Subcellular Location :

Cytoplasm .

Sort :

2261

No4 :

1

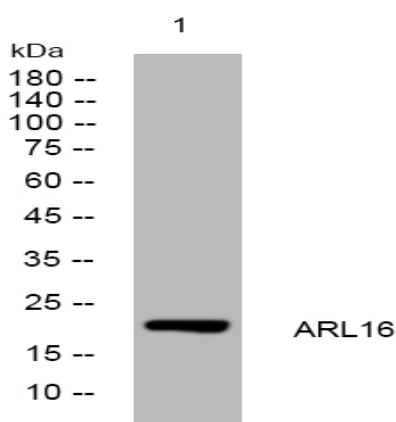
Host :

Rabbit

Modifications :

Unmodified

Products Images



Western blot analysis of lysates from HEK293 cells, primary antibody was diluted at 1:1000, 4° over night