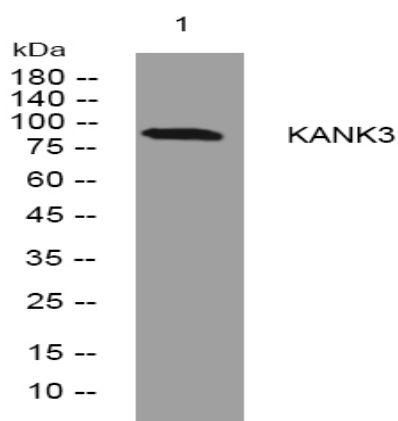


KANK3 rabbit pAb

Catalog No :	YT7682
Reactivity :	Human;Mouse
Applications :	WB
Target :	KANK3
Gene Name :	KANK3 ANKRD47
Protein Name :	KANK3
Human Gene Id :	256949
Human Swiss Prot No :	Q6NY19
Mouse Gene Id :	80880
Mouse Swiss Prot No :	Q9Z1P7
Immunogen :	Synthesized peptide derived from human KANK3 AA range: 135-185
Specificity :	This antibody detects endogenous levels of KANK3 at Human/Mouse
Formulation :	Liquid in PBS containing 50% glycerol, 0.5% BSA and 0.02% sodium azide.
Source :	Polyclonal, Rabbit,IgG
Dilution :	WB 1[?]500-2000
Purification :	The antibody was affinity-purified from rabbit antiserum by affinity-chromatography using epitope-specific immunogen.
Concentration :	1 mg/ml
Storage Stability :	-15°C to -25°C/1 year(Do not lower than -25°C)

Molecularweight :	92kD
Function :	similarity:Contains 5 ANK repeats.,
Expression :	Strongly expressed in breast, liver, lung, skeletal muscle and kidney.
Sort :	8838
No4 :	1
Host :	Rabbit
Modifications :	Unmodified

Products Images



Western blot analysis of lysates from 293T cells, primary antibody was diluted at 1:1000, 4° over night