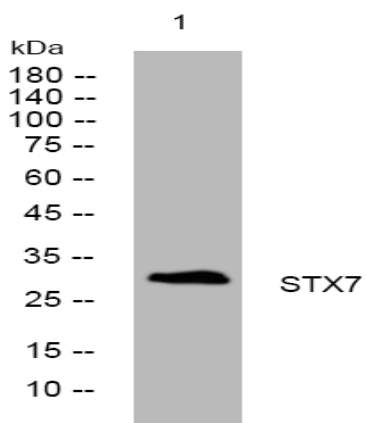


STX7 rabbit pAb

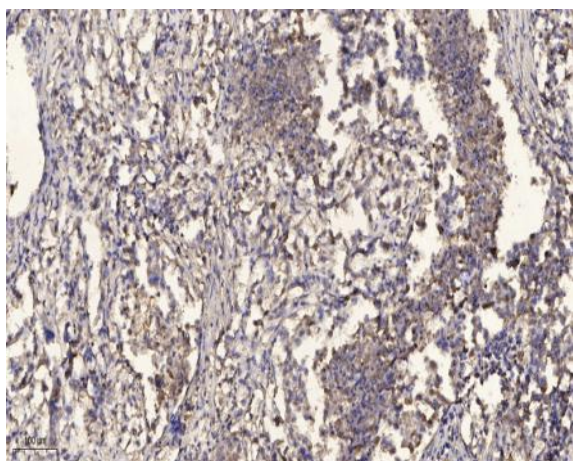
| | |
|------------------------------|---|
| Catalog No : | YT7678 |
| Reactivity : | Human;Mouse;Rat |
| Applications : | WB;IHC |
| Target : | STX7 |
| Fields : | >>SNARE interactions in vesicular transport;>>Phagosome |
| Gene Name : | STX7 |
| Protein Name : | STX7 |
| Human Gene Id : | 8417 |
| Human Swiss Prot No : | O15400 |
| Mouse Swiss Prot No : | O70439 |
| Rat Gene Id : | 100910446 |
| Rat Swiss Prot No : | O70257 |
| Immunogen : | Synthesized peptide derived from human STX7 AA range: 42-92 |
| Specificity : | This antibody detects endogenous levels of STX7 at Human/Mouse/Rat |
| Formulation : | Liquid in PBS containing 50% glycerol, 0.5% BSA and 0.02% sodium azide. |
| Source : | Polyclonal, Rabbit,IgG |
| Dilution : | WB 1:500-2000;IHC 1:50-300 |
| Purification : | The antibody was affinity-purified from rabbit antiserum by affinity-chromatography using epitope-specific immunogen. |

| | |
|-------------------------------|--|
| Concentration : | 1 mg/ml |
| Storage Stability : | -15°C to -25°C/1 year(Do not lower than -25°C) |
| Molecularweight : | 29kD |
| Background : | The protein encoded by this gene is a syntaxin family membrane receptor involved in vesicle transport. The encoded protein binds alpha-SNAP, an important regulator of transport vesicle fusion. Along with syntaxin 13, this protein plays a role in the ordered fusion of endosomes and lysosomes with the phagosome. [provided by RefSeq, May 2016], |
| Function : | function:May be involved in protein trafficking from the plasma membrane to the early endosome (EE) as well as in homotypic fusion of endocytic organelles. Mediates the endocytic trafficking from early endosomes to late endosomes and lysosomes.,similarity:Belongs to the syntaxin family.,similarity:Contains 1 t-SNARE coiled-coil homology domain.,subunit:Forms a SNARE complex with VTI1B, STX8 and VAMP8 which functions in the homotypic fusion of late endosomes. Interacts with VPS33A. Found in a complex with VAMP8 and VTI1B in the liver. Part of the SNARE core complex containing VAMP8, STX8 and VTI1B (By similarity). Interacts with VPS11, VPS16 and VPS18.,tissue specificity:Highest expression is found in placenta followed by heart, skeletal muscle, kidney and brain. Low expression is found in pancreas, lung and liver., |
| Subcellular Location : | Early endosome membrane ; Single-pass type IV membrane protein . |
| Expression : | Highest expression is found in placenta followed by heart, skeletal muscle, kidney and brain. Low expression is found in pancreas, lung and liver. |
| Sort : | 16762 |
| No4 : | 1 |
| Host : | Rabbit |
| Modifications : | Unmodified |

Products Images



Western blot analysis of lysates from MCF-7 cells, primary antibody was diluted at 1:1000, 4° over night



Immunohistochemical analysis of paraffin-embedded human Squamous cell carcinoma of lung. 1, Antibody was diluted at 1:200(4° overnight). 2, Tris-EDTA,pH9.0 was used for antigen retrieval. 3,Secondary antibody was diluted at 1:200(room temperature, 45min).