

KRA63 rabbit pAb

Catalog No :	YT7677
Reactivity :	Human
Applications :	IHC;IF
Target :	KRA63
Gene Name :	KRTAP6-3 KAP6.3
Protein Name :	KRA63
Human Swiss Prot No :	Q3LI67
Immunogen :	Synthesized peptide derived from human KRA63 AA range: 48-98
Specificity :	This antibody detects endogenous levels of KRA63 at Human
Formulation :	Liquid in PBS containing 50% glycerol, 0.5% BSA and 0.02% sodium azide.
Source :	Polyclonal, Rabbit,IgG
Dilution :	IHC 1:50-200. IF 1:50-200
Purification :	The antibody was affinity-purified from rabbit antiserum by affinity-chromatography using epitope-specific immunogen.
Concentration :	1 mg/ml
Storage Stability :	-15°C to -25°C/1 year(Do not lower than -25°C)
Molecularweight :	11kD
Function :	function:In the hair cortex, hair keratin intermediate filaments are embedded in an interfilamentous matrix, consisting of hair keratin-associated proteins (KRTAP), which are essential for the formation of a rigid and resistant hair shaft through their extensive disulfide bond cross-linking with abundant cysteine residues of hair keratins. The matrix proteins include the high-sulfur and high-

glycine-tyrosine keratins.,similarity:Belongs to the KRTAP type 6 family.,subunit:Interacts with hair keratins.,

Subcellular Location :intermediate filament,

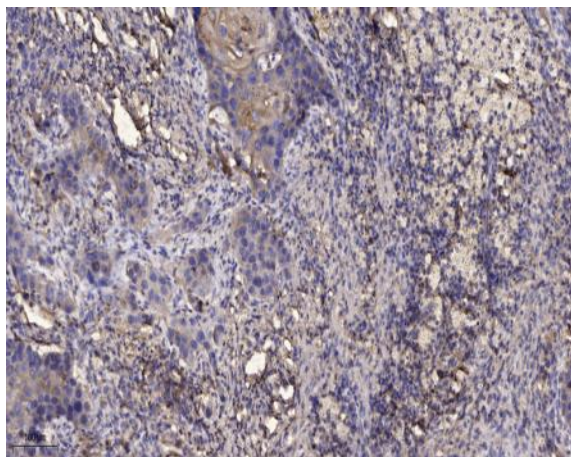
Sort :8999

No4 :1

Host :Rabbit

Modifications :Unmodified

Products Images



Immunohistochemical analysis of paraffin-embedded human Squamous cell carcinoma of lung. 1, Antibody was diluted at 1:200(4° overnight). 2, Tris-EDTA,pH9.0 was used for antigen retrieval. 3,Secondary antibody was diluted at 1:200(room temperature, 45min).