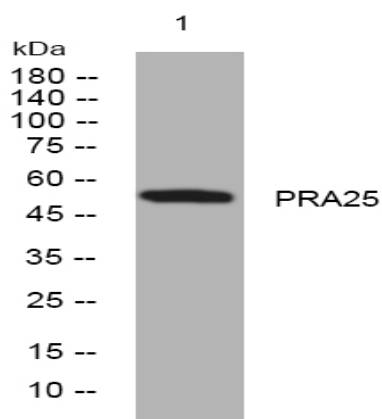


PRA25 rabbit pAb

Catalog No :	YT7676
Reactivity :	Human
Applications :	WB
Target :	PRA25
Gene Name :	PRAMEF25
Protein Name :	PRA25
Human Swiss Prot No :	A6NGN4
Immunogen :	Synthesized peptide derived from human PRA25 AA range: 106-156
Specificity :	This antibody detects endogenous levels of PRA25 at Human
Formulation :	Liquid in PBS containing 50% glycerol, 0.5% BSA and 0.02% sodium azide.
Source :	Polyclonal, Rabbit,IgG
Dilution :	WB 1:500-2000
Purification :	The antibody was affinity-purified from rabbit antiserum by affinity-chromatography using epitope-specific immunogen.
Concentration :	1 mg/ml
Storage Stability :	-15°C to -25°C/1 year(Do not lower than -25°C)
Molecularweight :	52kD
Function :	similarity:Belongs to the PRAME family.,similarity:Contains 3 LRR (leucine-rich) repeats.,
Sort :	12983

No4 :	<u>1</u>
Host :	<u>Rabbit</u>
Modifications :	<u>Unmodified</u>

Products Images



Western blot analysis of lysates from K562 cells, primary antibody was diluted at 1:1000, 4° over night