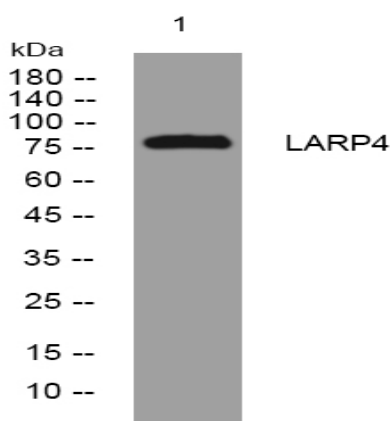


LARP4 rabbit pAb

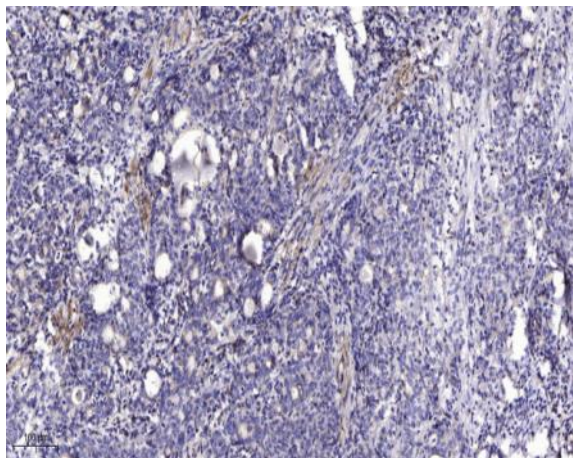
Catalog No :	YT7675
Reactivity :	Human;Mouse
Applications :	WB;ELISA;IHC
Target :	LARP4
Gene Name :	LARP4 PP13296
Protein Name :	LARP4
Human Gene Id :	113251
Human Swiss Prot No :	Q71RC2
Mouse Gene Id :	207214
Mouse Swiss Prot No :	Q8BWW4
Immunogen :	Synthesized peptide derived from human LARP4 AA range: 209-259
Specificity :	This antibody detects endogenous levels of LARP4 at Human/Mouse
Formulation :	Liquid in PBS containing 50% glycerol, 0.5% BSA and 0.02% sodium azide.
Source :	Polyclonal, Rabbit,IgG
Dilution :	WB 1:500-2000;IHC 1:50-300; ELISA 2000-20000
Purification :	The antibody was affinity-purified from rabbit antiserum by affinity-chromatography using epitope-specific immunogen.
Concentration :	1 mg/ml
Storage Stability :	-15°C to -25°C/1 year(Do not lower than -25°C)

Molecularweight : 80kD**Function :** sequence caution:Translation N-terminally extended.,similarity:Contains 1 HTH La-type RNA-binding domain.,similarity:Contains 1 RRM (RNA recognition motif) domain.,**Subcellular Location :** Cytoplasm, Stress granule . Cytoplasm, cytosol . Localized throughout the cytosol. Partially localized in stress granules in response to arsenite treatment .**Sort :** 9119**No4 :** 1**Host :** Rabbit**Modifications :** Unmodified

Products Images



Western blot analysis of lysates from K562 cells, primary antibody was diluted at 1:1000, 4° over night



Immunohistochemical analysis of paraffin-embedded human Gastric adenocarcinoma. 1, Antibody was diluted at 1:200(4° overnight). 2, Tris-EDTA,pH9.0 was used for antigen retrieval. 3,Secondary antibody was diluted at 1:200(room temperature, 45min).