

CT455 rabbit pAb

Catalog No :	YT7673
Reactivity :	Human;Rat;Mouse;
Applications :	WB
Target :	CT455
Gene Name :	CT45A5 CT45-5
Protein Name :	CT455
Human Gene Id :	441521
Human Swiss Prot No :	Q6NSH3
Immunogen :	Synthesized peptide derived from human CT455 AA range: 135-185
Specificity :	This antibody detects endogenous levels of CT455 at Human
Formulation :	Liquid in PBS containing 50% glycerol, 0.5% BSA and 0.02% sodium azide.
Source :	Polyclonal, Rabbit,IgG
Dilution :	WB 1:500-2000
Purification :	The antibody was affinity-purified from rabbit antiserum by affinity-chromatography using epitope-specific immunogen.
Concentration :	1 mg/ml
Storage Stability :	-15°C to -25°C/1 year(Do not lower than -25°C)
Molecularweight :	21kD
Background :	This gene represents one of a cluster of several similar genes located on the q arm of chromosome X. The genes in this cluster encode members of the cancer/testis (CT) family of antigens, and are distinct from other CT antigens.

These antigens are thought to be novel therapeutic targets for human cancers. Alternative splicing results in multiple transcript variants. [provided by RefSeq, Apr 2014],

Function :

tissue specificity:Testis specific. Expressed in cancer cell lines.,

Sort :

4643

No4 :

1

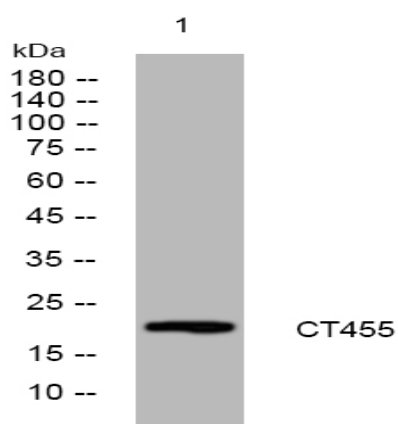
Host :

Rabbit

Modifications :

Unmodified

Products Images



Western blot analysis of lysates from AD293 cells, primary antibody was diluted at 1:1000, 4° over night