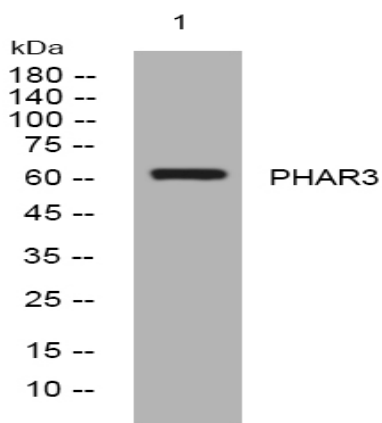


PHAR3 rabbit pAb

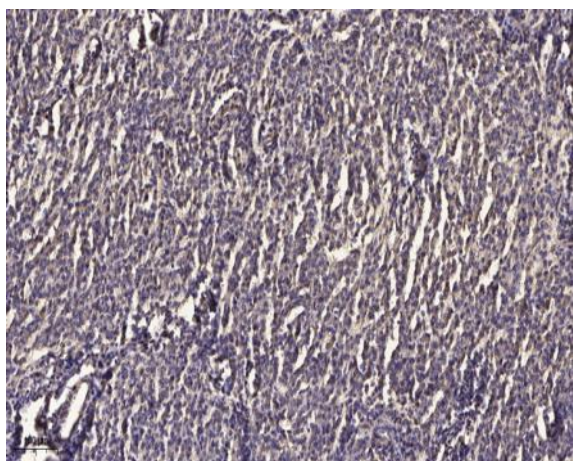
Catalog No :	YT7672
Reactivity :	Human;Mouse;Rat
Applications :	WB;ELISA;IHC
Target :	PHAR3
Gene Name :	PHACTR3 C20orf101 SCAPIN1
Protein Name :	PHAR3
Human Gene Id :	116154
Human Swiss Prot No :	Q96KR7
Mouse Gene Id :	74189
Mouse Swiss Prot No :	Q8BYK5
Rat Gene Id :	362284
Rat Swiss Prot No :	Q6RFY2
Immunogen :	Synthesized peptide derived from human PHAR3 AA range: 260-310
Specificity :	This antibody detects endogenous levels of PHAR3 at Human/Mouse/Rat
Formulation :	Liquid in PBS containing 50% glycerol, 0.5% BSA and 0.02% sodium azide.
Source :	Polyclonal, Rabbit,IgG
Dilution :	WB 1:500-2000;IHC 1:50-300; ELISA 2000-20000
Purification :	The antibody was affinity-purified from rabbit antiserum by affinity-chromatography using epitope-specific immunogen.

Concentration :	1 mg/ml
Storage Stability :	-15°C to -25°C/1 year(Do not lower than -25°C)
Molecularweight :	61kD
Background :	This gene encodes a member of the phosphatase and actin regulator protein family. The encoded protein is associated with the nuclear scaffold in proliferating cells, and binds to actin and the catalytic subunit of protein phosphatase-1, suggesting that it functions as a regulatory subunit of protein phosphatase-1. Alternative splicing results in multiple transcript variants. [provided by RefSeq, Jul 2013],
Function :	induction:Down-regulated in HL-60 leukemia cells by RA, PMA and dimethyl sulfoxide.,similarity:Belongs to the phosphatase and actin regulator family.,similarity:Contains 4 RPEL repeats.,subcellular location:Localized to the nuclear matrix-intermediate filament scaffold. Isoform 2 is also found in some cytoplasmic extensions.,subunit:Binds actin and PPP1CA; thus inhibiting the protein phosphatase 1 (PP1) activity.,tissue specificity:Abundantly expressed in brain. Also found in several tumors such as lung carcinomas, nervous tumors and HL-60 leukemia cells. Isoform 3 is the major form in U937, GOTO and HL-60 leukemia cells.,
Subcellular Location :	Nucleus matrix. Localized to the nuclear matrix-intermediate filament scaffold. Isoform 2 is also found in some cytoplasmic extensions.
Expression :	Abundantly expressed in brain. Also found in several tumors such as lung carcinomas, nervous tumors and HL-60 leukemia cells. Isoform 3 is the major form in U-937, GOTO and HL-60 leukemia cells.
Sort :	11880
No4 :	1
Host :	Rabbit
Modifications :	Unmodified

Products Images



Western blot analysis of lysates from MCF-7 cells, primary antibody was diluted at 1:1000, 4° over night



Immunohistochemical analysis of paraffin-embedded human meningioma. 1, Antibody was diluted at 1:200(4° overnight). 2, Tris-EDTA,pH9.0 was used for antigen retrieval. 3,Secondary antibody was diluted at 1:200(room temperature, 45min).