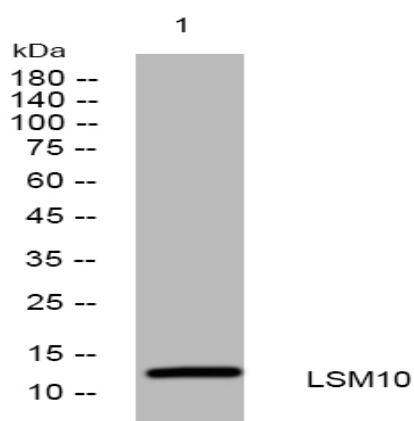


LSM10 rabbit pAb

Catalog No :	YT7671
Reactivity :	Human;Mouse
Applications :	WB
Target :	LSM10
Gene Name :	LSM10
Protein Name :	LSM10
Human Gene Id :	84967
Human Swiss Prot No :	Q969L4
Mouse Gene Id :	116748
Mouse Swiss Prot No :	Q8QZX5
Immunogen :	Synthesized peptide derived from human LSM10 AA range: 73-123
Specificity :	This antibody detects endogenous levels of LSM10 at Human/Mouse
Formulation :	Liquid in PBS containing 50% glycerol, 0.5% BSA and 0.02% sodium azide.
Source :	Polyclonal, Rabbit,IgG
Dilution :	WB 1:500-2000
Purification :	The antibody was affinity-purified from rabbit antiserum by affinity-chromatography using epitope-specific immunogen.
Concentration :	1 mg/ml
Storage Stability :	-15°C to -25°C/1 year(Do not lower than -25°C)

Molecularweight :	14kD
Function :	function: Binds specifically to U7 snRNA., similarity: Belongs to the snRNP Sm proteins family.,
Subcellular Location :	Nucleus .
Sort :	9273
No4 :	1
Host :	Rabbit
Modifications :	Unmodified

Products Images



Western blot analysis of lysates from 293T cells, primary antibody was diluted at 1:1000, 4 ° over night