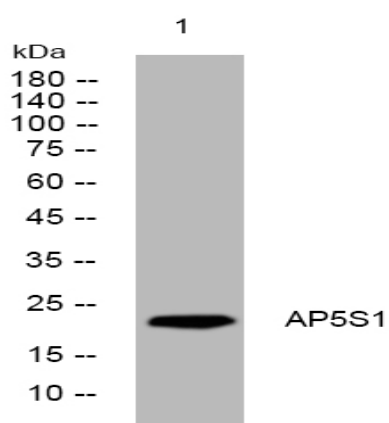


AP5S1 rabbit pAb

Catalog No :	YT7669
Reactivity :	Human;Mouse
Applications :	WB
Target :	AP5S1
Gene Name :	AP5S1 C20orf29
Protein Name :	AP5S1
Human Gene Id :	55317
Human Swiss Prot No :	Q9NUS5
Mouse Swiss Prot No :	Q9D742
Immunogen :	Synthesized peptide derived from human AP5S1 AA range: 146-196
Specificity :	This antibody detects endogenous levels of AP5S1 at Human/Mouse
Formulation :	Liquid in PBS containing 50% glycerol, 0.5% BSA and 0.02% sodium azide.
Source :	Polyclonal, Rabbit,IgG
Dilution :	WB 1:500-2000
Purification :	The antibody was affinity-purified from rabbit antiserum by affinity-chromatography using epitope-specific immunogen.
Concentration :	1 mg/ml
Storage Stability :	-15°C to -25°C/1 year(Do not lower than -25°C)
Molecularweight :	22kD

Subcellular Location :	Cytoplasm, cytosol . Late endosome membrane ; Peripheral membrane protein ; Cytoplasmic side . Lysosome membrane ; Peripheral membrane protein ; Cytoplasmic side .
Sort :	2113
No4 :	1
Host :	Rabbit
Modifications :	Unmodified

Products Images



Western blot analysis of lysates from DU145 cells, primary antibody was diluted at 1:1000, 4° over night