

DREB rabbit pAb

Catalog No :	YT7666
Reactivity :	Human;Mouse;Rat
Applications :	WB
Target :	DREB
Gene Name :	DBN1 D0S117E
Protein Name :	DREB
Human Gene Id :	1627
Human Swiss Prot No :	Q16643
Mouse Gene Id :	56320
Mouse Swiss Prot No :	Q9QXS6
Rat Gene Id :	81653
Rat Swiss Prot No :	Q07266
Immunogen :	Synthesized peptide derived from human DREB AA range: 484-534
Specificity :	This antibody detects endogenous levels of DREB at Human/Mouse/Rat
Formulation :	Liquid in PBS containing 50% glycerol, 0.5% BSA and 0.02% sodium azide.
Source :	Polyclonal, Rabbit,IgG
Dilution :	WB 1:500-2000
Purification :	The antibody was affinity-purified from rabbit antiserum by affinity-chromatography using epitope-specific immunogen.

Concentration : 1 mg/ml

Storage Stability : -15°C to -25°C/1 year(Do not lower than -25°C)

Molecularweight : 71kD

Background : The protein encoded by this gene is a cytoplasmic actin-binding protein thought to play a role in the process of neuronal growth. It is a member of the drebrin family of proteins that are developmentally regulated in the brain. A decrease in the amount of this protein in the brain has been implicated as a possible contributing factor in the pathogenesis of memory disturbance in Alzheimer's disease. At least two alternative splice variants encoding different protein isoforms have been described for this gene. [provided by RefSeq, Jul 2008],

Function : function:Drebrins might play some role in cell migration, extension of neuronal processes and plasticity of dendrites, respectively.,similarity:Contains 1 ADF-H domain.,subunit:Binds F-actin.,tissue specificity:Brain neurons. Also found in the heart, placenta, skeletal muscle, kidney and pancreas.,

Subcellular Location : Cytoplasm . Cell projection, dendrite . Cytoplasm, cell cortex . Cell junction . Cell projection, growth cone . In the absence of antigen, evenly distributed throughout subcortical regions of the T-cell membrane and cytoplasm (PubMed:20215400). In the presence of antigen, distributes to the immunological synapse forming at the T-cell-APC contact area, where it localizes at the peripheral and distal supramolecular activation clusters (SMAC) (PubMed:20215400). Colocalized with RUFY3 and F-actin at the transitional domain of the axonal growth cone (By similarity). .

Expression : Expressed in the brain, with expression in the molecular layer of the dentate gyrus, stratum pyramidale, and stratum radiatum of the hippocampus (at protein level) (PubMed:8838578). Also expressed in the terminal varicosities distributed along dendritic trees of pyramidal cells in CA4 and CA3 of the hippocampus (at protein level) (PubMed:8838578). Expressed in pyramidal cells in CA2, CA1 and the subiculum of the hippocampus (at protein level) (PubMed:8838578). Expressed in peripheral blood lymphocytes, including T-cells (at protein level) (PubMed:20215400). Expressed in the brain (PubMed:8216329, Ref.2). Expressed in the heart, placenta, lung, skeletal muscle, kidney, pancreas, skin fibroblasts, gingival fibroblasts and bone-derived cells (Ref.2).

Sort : 5262

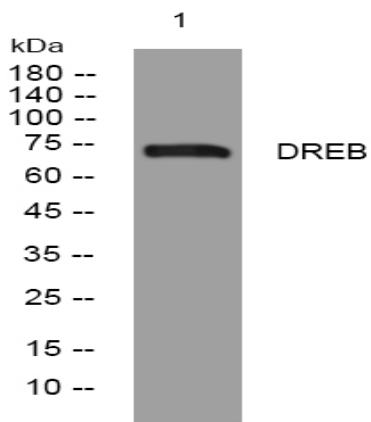
No4 : 1

Host : Rabbit

Unmodified

Modifications :

Products Images



Western blot analysis of lysates from HeLa cells, primary antibody was diluted at 1:1000, 4 ° over night