

BLMH rabbit pAb

Catalog No :	YT7665
Reactivity :	Human;Mouse;Rat
Applications :	WB
Target :	BLMH
Gene Name :	BLMH
Protein Name :	BLMH
Human Gene Id :	642
Human Swiss Prot No :	Q13867
Mouse Gene Id :	104184
Mouse Swiss Prot No :	Q8R016
Rat Swiss Prot No :	P70645
Immunogen :	Synthesized peptide derived from human BLMH AA range: 170-220
Specificity :	This antibody detects endogenous levels of BLMH at Human/Mouse/Rat
Formulation :	Liquid in PBS containing 50% glycerol, 0.5% BSA and 0.02% sodium azide.
Source :	Polyclonal, Rabbit,IgG
Dilution :	WB 1[?]500-2000
Purification :	The antibody was affinity-purified from rabbit antiserum by affinity-chromatography using epitope-specific immunogen.
Concentration :	1 mg/ml

Storage Stability : -15°C to -25°C/1 year(Do not lower than -25°C)

Molecularweight : 50kD

Background : Bleomycin hydrolase (BMH) is a cytoplasmic cysteine peptidase that is highly conserved through evolution; however, the only known activity of the enzyme is metabolic inactivation of the glycopeptide bleomycin (BLM), an essential component of combination chemotherapy regimens for cancer. The protein contains the signature active site residues of the cysteine protease papain superfamily. [provided by RefSeq, Jul 2008],

Function : catalytic activity:Inactivates bleomycin B2 (a cytotoxic glycometallopeptide) by hydrolysis of a carboxamide bond of beta-aminoalanine, but also shows general aminopeptidase activity. The specificity varies somewhat with source, but amino acid arylamides of Met, Leu and Ala are preferred.,function:The normal physiological role of BLM hydrolase is unknown, but it catalyzes the inactivation of the antitumor drug BLM (a glycopeptide) by hydrolyzing the carboxamide bond of its B-aminoalaninamide moiety thus protecting normal and malignant cells from BLM toxicity.,similarity:Belongs to the peptidase C1 family.,subunit:Homohexamer.,

Subcellular Location : Cytoplasm . Cytoplasmic granule . Co-localizes with NUDT12 in the cytoplasmic granules. .

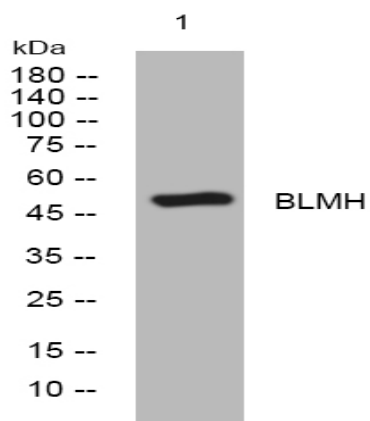
Sort : 2774

No4 : 1

Host : Rabbit

Modifications : Unmodified

Products Images



Western blot analysis of lysates from U2OS cells, primary antibody was diluted at 1:1000, 4° over night