

ABR rabbit pAb

Catalog No :	YT7664
Reactivity :	Human;Mouse
Applications :	WB
Target :	ABR
Gene Name :	ABR
Protein Name :	ABR
Human Gene Id :	29
Human Swiss Prot No :	Q12979
Mouse Gene Id :	109934
Mouse Swiss Prot No :	Q5SSL4
Immunogen :	Synthesized peptide derived from human ABR AA range: 393-443
Specificity :	This antibody detects endogenous levels of ABR at Human/Mouse
Formulation :	Liquid in PBS containing 50% glycerol, 0.5% BSA and 0.02% sodium azide.
Source :	Polyclonal, Rabbit,IgG
Dilution :	WB 1:500-2000
Purification :	The antibody was affinity-purified from rabbit antiserum by affinity-chromatography using epitope-specific immunogen.
Concentration :	1 mg/ml
Storage Stability :	-15°C to -25°C/1 year(Do not lower than -25°C)

Molecularweight : 94kD

Background : This gene encodes a protein that is similar to the protein encoded by the breakpoint cluster region gene located on chromosome 22. The protein encoded by this gene contains a GTPase-activating protein domain, a domain found in members of the Rho family of GTP-binding proteins. Functional studies in mice determined that this protein plays a role in vestibular morphogenesis. Alternatively spliced transcript variants have been reported for this gene. [provided by RefSeq, Feb 2012],

Function : function:GTPase-activating protein for RAC and CDC42. Promotes the exchange of RAC or CDC42-bound GDP by GTP, thereby activating them.,similarity:Contains 1 C2 domain.,similarity:Contains 1 DH (DBL-homology) domain.,similarity:Contains 1 PH domain.,similarity:Contains 1 Rho-GAP domain.,tissue specificity:Highly enriched in the brain. Much weaker expression in heart, lung and muscle.,

Subcellular Location : Cell projection, dendritic spine . Cell projection, axon . Cell junction, synapse .

Expression : Highly enriched in the brain. Much weaker expression in heart, lung and muscle.

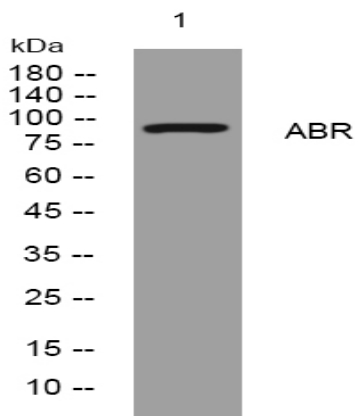
Sort : 1607

No4 : 1

Host : Rabbit

Modifications : Unmodified

Products Images



Western blot analysis of lysates from HeLa cells, primary antibody was diluted at 1:1000, 4° over night