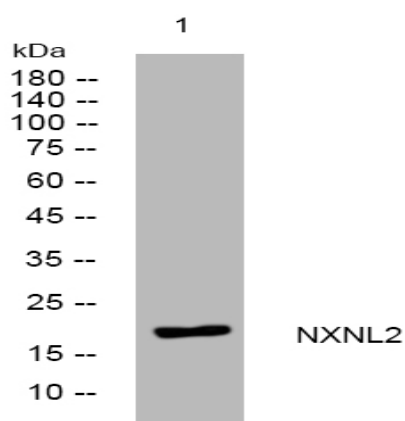


NXNL2 rabbit pAb

Catalog No :	YT7660
Reactivity :	Human;Mouse
Applications :	WB
Target :	NXNL2
Gene Name :	NXNL2 C9orf121
Protein Name :	NXNL2
Human Gene Id :	158046
Human Swiss Prot No :	Q5VZ03
Mouse Gene Id :	75124
Mouse Swiss Prot No :	Q9D531
Immunogen :	Synthesized peptide derived from human NXNL2 AA range: 36-86
Specificity :	This antibody detects endogenous levels of NXNL2 at Human/Mouse
Formulation :	Liquid in PBS containing 50% glycerol, 0.5% BSA and 0.02% sodium azide.
Source :	Polyclonal, Rabbit,IgG
Dilution :	WB 1[?]500-2000
Purification :	The antibody was affinity-purified from rabbit antiserum by affinity-chromatography using epitope-specific immunogen.
Concentration :	1 mg/ml
Storage Stability :	-15°C to -25°C/1 year(Do not lower than -25°C)

Molecularweight :	17kD
Function :	similarity:Belongs to the nucleoredoxin family.,similarity:Contains 1 thioredoxin domain.,
Subcellular Location :	cytoplasm,
Sort :	11015
No4 :	1
Host :	Rabbit
Modifications :	Unmodified

Products Images



Western blot analysis of lysates from Hela cells, primary antibody was diluted at 1:1000, 4 ° over night