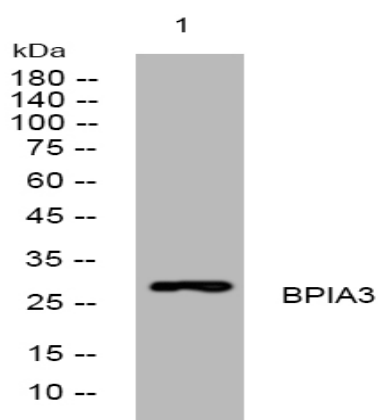


BPIA3 rabbit pAb

Catalog No :	YT7657
Reactivity :	Human;Mouse
Applications :	WB
Target :	BPIA3
Gene Name :	BPIFA3 C20orf71 SPLUNC3
Protein Name :	BPIA3
Human Gene Id :	128861
Human Swiss Prot No :	Q9BQP9
Mouse Swiss Prot No :	Q9D9J8
Immunogen :	Synthesized peptide derived from human BPIA3 AA range: 73-123
Specificity :	This antibody detects endogenous levels of BPIA3 at Human/Mouse
Formulation :	Liquid in PBS containing 50% glycerol, 0.5% BSA and 0.02% sodium azide.
Source :	Polyclonal, Rabbit,IgG
Dilution :	WB 1:500-2000
Purification :	The antibody was affinity-purified from rabbit antiserum by affinity-chromatography using epitope-specific immunogen.
Concentration :	1 mg/ml
Storage Stability :	-15°C to -25°C/1 year(Do not lower than -25°C)
Molecularweight :	28kD

Function :	<u>similarity:Belongs to the BPI/LBP/Plunc superfamily. Plunc family.,</u>
Subcellular Location :	<u>Secreted .</u>
Sort :	<u>2843</u>
No4 :	<u>1</u>
Host :	<u>Rabbit</u>
Modifications :	<u>Unmodified</u>

Products Images



Western blot analysis of lysates from A549 cells, primary antibody was diluted at 1:1000, 4° over night