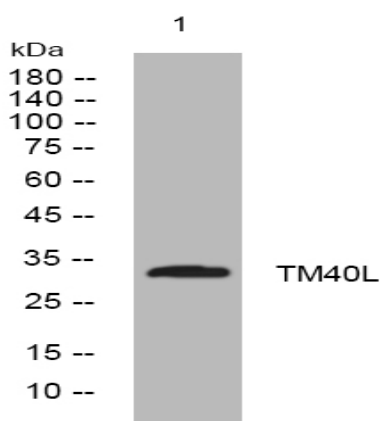


TM40L rabbit pAb

Catalog No :	YT7656
Reactivity :	Human;Mouse;Rat
Applications :	WB
Target :	TM40L
Fields :	>>Amyotrophic lateral sclerosis;>>Pathways of neurodegeneration - multiple diseases
Gene Name :	TOMM40L TOMM40B
Protein Name :	TM40L
Human Gene Id :	84134
Human Swiss Prot No :	Q969M1
Mouse Gene Id :	641376
Mouse Swiss Prot No :	Q9CZR3
Rat Gene Id :	304971
Rat Swiss Prot No :	A4F267
Immunogen :	Synthesized peptide derived from human TM40L AA range: 236-286
Specificity :	This antibody detects endogenous levels of TM40L at Human/Mouse/Rat
Formulation :	Liquid in PBS containing 50% glycerol, 0.5% BSA and 0.02% sodium azide.
Source :	Polyclonal, Rabbit,IgG
Dilution :	WB 1:500-2000

Purification :	The antibody was affinity-purified from rabbit antiserum by affinity-chromatography using epitope-specific immunogen.
Concentration :	1 mg/ml
Storage Stability :	-15°C to -25°C/1 year(Do not lower than -25°C)
Molecularweight :	34kD
Function :	function:Potential channel-forming protein implicated in import of protein precursors into mitochondria.,similarity:Belongs to the Tom40 family.,subunit:Forms part of the preprotein translocase of the outer mitochondrial membrane (TOM complex) containing TOMM22, TOMM40, TOMM40L and TOMM70. Interacts with mitochondrial targeting sequences.,
Subcellular Location :	Mitochondrion outer membrane ; Multi-pass membrane protein .
Sort :	17217
No4 :	1
Host :	Rabbit
Modifications :	Unmodified

Products Images



Western blot analysis of lysates from HeLa cells, primary antibody was diluted at 1:1000, 4° over night