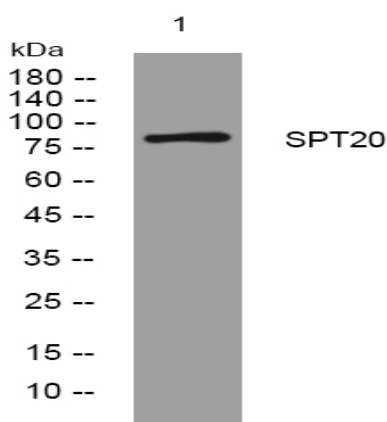


SPT20 rabbit pAb

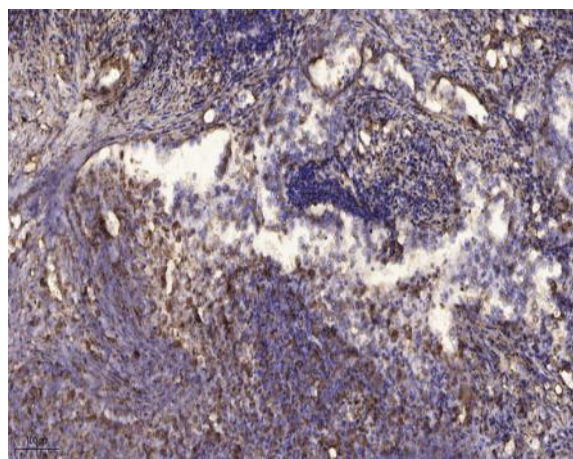
Catalog No :	YT7654
Reactivity :	Human;Mouse;Rat
Applications :	WB;IHC
Target :	SPT20
Gene Name :	SPATA20
Protein Name :	SPT20
Human Gene Id :	64847
Human Swiss Prot No :	Q8TB22
Mouse Gene Id :	217116
Mouse Swiss Prot No :	Q80YT5
Rat Gene Id :	360604
Rat Swiss Prot No :	Q6T393
Immunogen :	Synthesized peptide derived from human SPT20 AA range: 473-523
Specificity :	This antibody detects endogenous levels of SPT20 at Human/Mouse/Rat
Formulation :	Liquid in PBS containing 50% glycerol, 0.5% BSA and 0.02% sodium azide.
Source :	Polyclonal, Rabbit,IgG
Dilution :	WB 1:500-2000;IHC 1:50-300
Purification :	The antibody was affinity-purified from rabbit antiserum by affinity-chromatography using epitope-specific immunogen.

Concentration :	1 mg/ml
Storage Stability :	-15°C to -25°C/1 year(Do not lower than -25°C)
Molecularweight :	86kD
Function :	function:May play a role in fertility regulation.,
Subcellular Location :	Secreted .
Sort :	16563
No4 :	1
Host :	Rabbit
Modifications :	Unmodified

Products Images



Western blot analysis of lysates from 293T cells, primary antibody was diluted at 1:1000, 4° over night



Immunohistochemical analysis of paraffin-embedded human Squamous cell carcinoma of lung. 1, Antibody was diluted at 1:200(4° overnight). 2, Tris-EDTA,pH9.0 was used for antigen retrieval. 3,Secondary antibody was diluted at 1:200(room temperature, 45min).