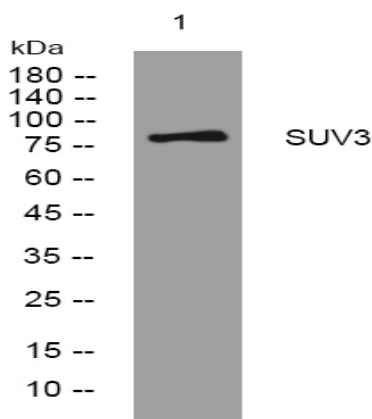


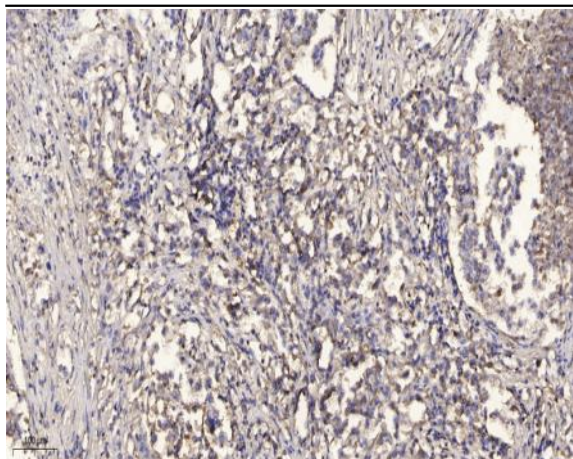
## SUV3 rabbit pAb

<b>Catalog No :</b>	YT7651
<b>Reactivity :</b>	Human;Mouse;Rat
<b>Applications :</b>	WB;ELISA;IHC
<b>Target :</b>	SUV3
<b>Gene Name :</b>	SUPV3L1 SUV3
<b>Protein Name :</b>	SUV3
<b>Human Gene Id :</b>	6832
<b>Human Swiss Prot No :</b>	Q8IYB8
<b>Mouse Gene Id :</b>	338359
<b>Mouse Swiss Prot No :</b>	Q80YD1
<b>Rat Gene Id :</b>	294385
<b>Rat Swiss Prot No :</b>	Q5EBA1
<b>Immunogen :</b>	Synthesized peptide derived from human SUV3 AA range: 443-493
<b>Specificity :</b>	This antibody detects endogenous levels of SUV3 at Human/Mouse/Rat
<b>Formulation :</b>	Liquid in PBS containing 50% glycerol, 0.5% BSA and 0.02% sodium azide.
<b>Source :</b>	Polyclonal, Rabbit,IgG
<b>Dilution :</b>	WB 1:500-2000;IHC 1:50-300; ELISA 2000-20000
<b>Purification :</b>	The antibody was affinity-purified from rabbit antiserum by affinity-chromatography using epitope-specific immunogen.

<b>Concentration :</b>	1 mg/ml
<b>Storage Stability :</b>	-15°C to -25°C/1 year(Do not lower than -25°C)
<b>Molecularweight :</b>	86kD
<b>Function :</b>	cofactor:Magnesium or manganese.,enzyme regulation:Helicase activity toward DNA substrate is inhibited by micromolar concentrations of 5,6-dichloro-1-(beta-D-ribofuranosyl)benzotriazole (DRBT) and 4,5,6,7-tetrabromobenzotriazole (TBBT). Helicase activity toward RNA substrate is inhibited by elevated concentrations of TBBT. Inhibited by some ring-expanded nucleoside analogs.,function:ATPase and DNA/RNA helicase able to unwind DNA/DNA, DNA/RNA and RNA/RNA duplexes in the 5'-3' direction. May protect cells from apoptosis.,similarity:Belongs to the helicase family.,similarity:Contains 1 helicase ATP-binding domain.,similarity:Contains 1 helicase C-terminal domain.,subunit:Interacts with HBXIP.,tissue specificity:Broadly expressed.,
<b>Subcellular Location :</b>	Nucleus . Mitochondrion matrix . Mitochondrion matrix, mitochondrion nucleoid .
<b>Expression :</b>	Broadly expressed.
<b>Sort :</b>	16776
<b>No4 :</b>	1
<b>Host :</b>	Rabbit
<b>Modifications :</b>	Unmodified

## Products Images





Immunohistochemical analysis of paraffin-embedded human Squamous cell carcinoma of lung. 1, Antibody was diluted at 1:200(4° overnight). 2, Tris-EDTA,pH9.0 was used for antigen retrieval. 3,Secondary antibody was diluted at 1:200(room temperature, 45min).