

## CC157 rabbit pAb

<b>Catalog No :</b>	YT7647
<b>Reactivity :</b>	Human;Mouse
<b>Applications :</b>	WB
<b>Target :</b>	CC157
<b>Gene Name :</b>	CCDC157 KIAA1656
<b>Protein Name :</b>	CC157
<b>Human Gene Id :</b>	550631
<b>Human Swiss Prot No :</b>	Q569K6
<b>Mouse Gene Id :</b>	216516
<b>Mouse Swiss Prot No :</b>	Q5SPX1
<b>Immunogen :</b>	Synthesized peptide derived from human CC157 AA range: 16-66
<b>Specificity :</b>	This antibody detects endogenous levels of CC157 at Human/Mouse
<b>Formulation :</b>	Liquid in PBS containing 50% glycerol, 0.5% BSA and 0.02% sodium azide.
<b>Source :</b>	Polyclonal, Rabbit,IgG
<b>Dilution :</b>	WB 1:500-2000
<b>Purification :</b>	The antibody was affinity-purified from rabbit antiserum by affinity-chromatography using epitope-specific immunogen.
<b>Concentration :</b>	1 mg/ml
<b>Storage Stability :</b>	-15°C to -25°C/1 year(Do not lower than -25°C)

**Molecularweight :** 83kD

**Function :** sequence caution:Intron retention. This sequence is incomplete at the 5'- and 3'-ends and extensively differs from that shown due to multiple introns.,

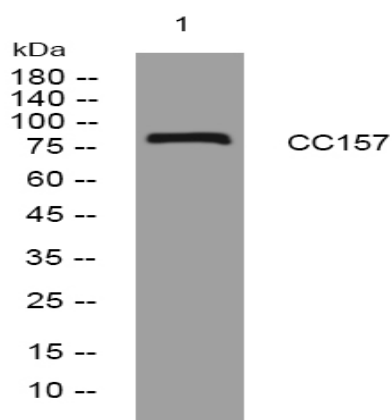
**Sort :** 3301

**No4 :** 1

**Host :** Rabbit

**Modifications :** Unmodified

## Products Images



Western blot analysis of lysates from U2OS cells, primary antibody was diluted at 1:1000, 4° over night