

ROMO1 rabbit pAb

Catalog No :	YT7645
Reactivity :	Human;Mouse
Applications :	IHC;IF
Target :	ROMO1
Gene Name :	ROMO1 C20orf52
Protein Name :	ROMO1
Human Gene Id :	140823
Human Swiss Prot No :	P60602
Mouse Gene Id :	67067
Mouse Swiss Prot No :	P60603
Immunogen :	Synthesized peptide derived from human ROMO1 AA range: 17-67
Specificity :	This antibody detects endogenous levels of ROMO1 at Human/Mouse
Formulation :	Liquid in PBS containing 50% glycerol, 0.5% BSA and 0.02% sodium azide.
Source :	Polyclonal, Rabbit,IgG
Dilution :	IHC 1:50-200. IF 1:50-200
Purification :	The antibody was affinity-purified from rabbit antiserum by affinity-chromatography using epitope-specific immunogen.
Concentration :	1 mg/ml
Storage Stability :	-15°C to -25°C/1 year(Do not lower than -25°C)

Molecularweight : 9kD

Background : The protein encoded by this gene is a mitochondrial membrane protein that is responsible for increasing the level of reactive oxygen species (ROS) in cells. The protein also has antimicrobial activity against a variety of bacteria by inducing bacterial membrane breakage. [provided by RefSeq, Nov 2014],

Function : developmental stage:Expression increases in senescent cells.,function:Induces production of reactive oxygen species (ROS) which are necessary for cell proliferation. May play a role in inducing oxidative DNA damage and replicative senescence.,induction:By the anticancer drug fluorouracil (5FU).,miscellaneous:Enforced expression in IMR-90 cells leads to increased levels of ROS and induces premature cell senescence and nuclear DNA damage.,similarity:Belongs to the MGR2 family.,tissue specificity:Up-regulated in a number of cancer cell lines when compared to a normal lung fibroblast cell line.,

Subcellular Location : Mitochondrion inner membrane ; Single-pass membrane protein .

Expression : Up-regulated in a number of cancer cell lines when compared to a normal lung fibroblast cell line. Highly expressed in brain tumors.

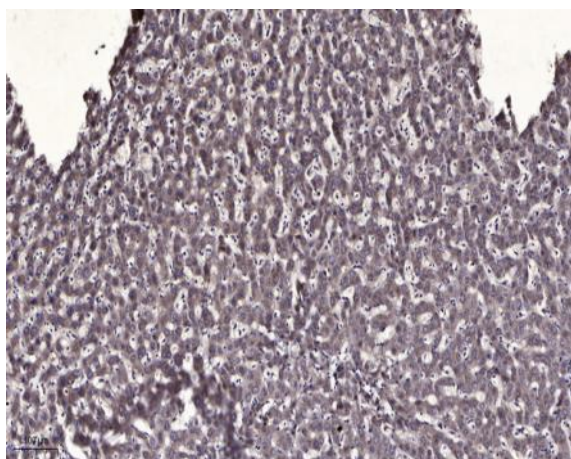
Sort : 14575

No4 : 1

Host : Rabbit

Modifications : Unmodified

Products Images



Immunohistochemical analysis of paraffin-embedded human liver cancer. 1, Antibody was diluted at 1:200(4° overnight). 2, Tris-EDTA,pH9.0 was used for antigen retrieval. 3,Secondary antibody was diluted at 1:200(room temperature, 45min).