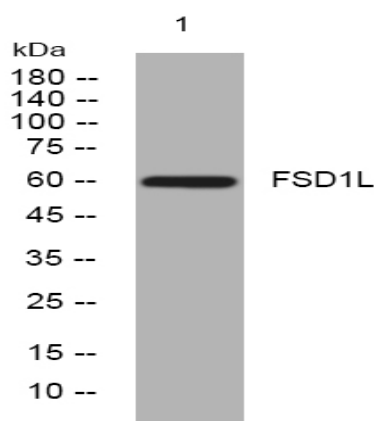


FSD1L rabbit pAb

Catalog No :	YT7644
Reactivity :	Human;Mouse
Applications :	WB
Target :	FSD1L
Gene Name :	FSD1L CCDC10 CSDUFD1 FSD1CL FSD1NL
Protein Name :	FSD1L
Human Gene Id :	83856
Human Swiss Prot No :	Q9BXM9
Mouse Gene Id :	319636
Mouse Swiss Prot No :	Q8BYN5
Immunogen :	Synthesized peptide derived from human FSD1L AA range: 10-60
Specificity :	This antibody detects endogenous levels of FSD1L at Human/Mouse
Formulation :	Liquid in PBS containing 50% glycerol, 0.5% BSA and 0.02% sodium azide.
Source :	Polyclonal, Rabbit,IgG
Dilution :	WB 1:500-2000
Purification :	The antibody was affinity-purified from rabbit antiserum by affinity-chromatography using epitope-specific immunogen.
Concentration :	1 mg/ml
Storage Stability :	-15°C to -25°C/1 year(Do not lower than -25°C)

Molecularweight :	58kD
Function :	similarity:Contains 1 B30.2/SPRY domain.,
Subcellular Location :	intracellular,integral component of membrane,
Sort :	6312
No4 :	1
Host :	Rabbit
Modifications :	Unmodified

Products Images



Western blot analysis of lysates from PC-12 cells, primary antibody was diluted at 1:1000, 4° over night