

DTX3 rabbit pAb

Catalog No :	YT7638
Reactivity :	Human;Mouse
Applications :	WB
Target :	DTX3
Fields :	>>Notch signaling pathway
Gene Name :	DTX3 RNF154
Protein Name :	DTX3
Human Gene Id :	196403
Human Swiss Prot No :	Q8N9I9
Mouse Gene Id :	80904
Mouse Swiss Prot No :	Q80V91
Immunogen :	Synthesized peptide derived from human DTX3 AA range: 87-137
Specificity :	This antibody detects endogenous levels of DTX3 at Human/Mouse
Formulation :	Liquid in PBS containing 50% glycerol, 0.5% BSA and 0.02% sodium azide.
Source :	Polyclonal, Rabbit,IgG
Dilution :	WB 1[?]500-2000
Purification :	The antibody was affinity-purified from rabbit antiserum by affinity-chromatography using epitope-specific immunogen.
Concentration :	1 mg/ml

Storage Stability : -15°C to -25°C/1 year(Do not lower than -25°C)

Molecularweight : 38kD

Background : DTX3 functions as an E3 ubiquitin ligase (Takeyama et al., 2003 [PubMed 12670957]).[supplied by OMIM, Nov 2009],

Function : function:Regulator of Notch signaling, a signaling pathway involved in cell-cell communications that regulates a broad spectrum of cell-fate determinations. Probably acts both as a positive and negative regulator of Notch, depending on the developmental and cell context (By similarity). Functions as an ubiquitin ligase protein in vitro, suggesting that it may regulate the Notch pathway via some ubiquitin ligase activity.,sequence caution:Intron retention.,similarity:Belongs to the Deltex family.,similarity:Contains 1 RING-type zinc finger.,subunit:Homomultimer. May form a heteromultimer with other members of the Deltex family. Interacts with NOTCH1.,

Subcellular Location : Cytoplasm .

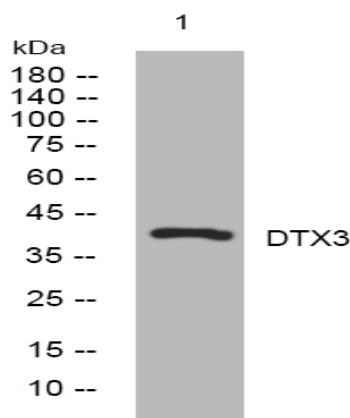
Sort : 5278

No4 : 1

Host : Rabbit

Modifications : Unmodified

Products Images



Western blot analysis of lysates from SH-SY5Y cells, primary antibody was diluted at 1:1000, 4° over night