

## FBX17 rabbit pAb

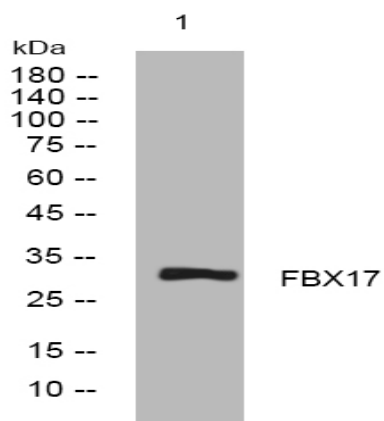
<b>Catalog No :</b>	YT7637
<b>Reactivity :</b>	Human;Mouse;Rat
<b>Applications :</b>	WB
<b>Target :</b>	FBX17
<b>Gene Name :</b>	FBXO17 FBG4 FBX17 FBX26 FBXO26
<b>Protein Name :</b>	FBX17
<b>Human Gene Id :</b>	115290
<b>Human Swiss Prot No :</b>	Q96EF6
<b>Mouse Gene Id :</b>	50760
<b>Mouse Swiss Prot No :</b>	Q9QZM8
<b>Rat Gene Id :</b>	292757
<b>Rat Swiss Prot No :</b>	Q6AY27
<b>Immunogen :</b>	Synthesized peptide derived from human FBX17 AA range: 61-111
<b>Specificity :</b>	This antibody detects endogenous levels of FBX17 at Human/Mouse/Rat
<b>Formulation :</b>	Liquid in PBS containing 50% glycerol, 0.5% BSA and 0.02% sodium azide.
<b>Source :</b>	Polyclonal, Rabbit,IgG
<b>Dilution :</b>	WB 1:500-2000
<b>Purification :</b>	The antibody was affinity-purified from rabbit antiserum by affinity-chromatography using epitope-specific immunogen.

---

<b>Concentration :</b>	1 mg/ml
<b>Storage Stability :</b>	-15°C to -25°C/1 year(Do not lower than -25°C)
<b>Molecularweight :</b>	31kD
<b>Background :</b>	<p>This gene encodes a member of the F-box protein family which is characterized by the F-box motif. The F-box proteins constitute one of the four subunits of the ubiquitin protein ligase complex called SCFs (SKP1-cullin-F-box), which function in phosphorylation-dependent ubiquitination. The F-box proteins are divided into 3 classes: Fbws containing WD-40 domains, Fbls containing leucine-rich repeats, and Fbxs containing either different protein-protein interaction modules or no recognizable motifs. The protein encoded by this gene belongs to the Fbxs class and it contains an F-box domain. Alternative splicing results in multiple transcript variants. [provided by RefSeq, Jul 2013],</p>
<b>Function :</b>	<p>function:Substrate-recognition component of the SCF (SKP1-CUL1-F-box protein)-type E3 ubiquitin ligase complex.,similarity:Contains 1 F-box domain.,similarity:Contains 1 FBA (F-box associated) domain.,subunit:Directly interacts with SKP1A and CUL1.,tissue specificity:Expressed in heart, skeletal muscle, liver and kidney. Expressed at lower levels in spleen and brain.,</p>
<b>Subcellular Location :</b>	SCF ubiquitin ligase complex,
<b>Expression :</b>	Expressed in heart, skeletal muscle, liver and kidney. Expressed at lower levels in spleen and brain.
<b>Sort :</b>	5977
<b>No4 :</b>	1
<b>Host :</b>	Rabbit
<b>Modifications :</b>	Unmodified

---

## Products Images



Western blot analysis of lysates from MCF-7 cells, primary antibody was diluted at 1:1000, 4° over night