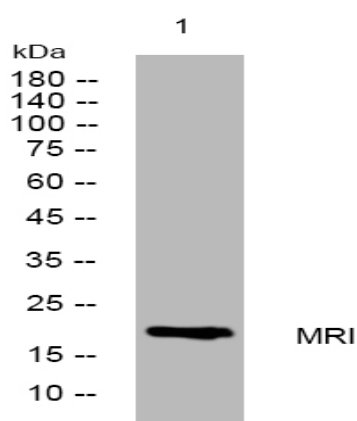


MRI rabbit pAb

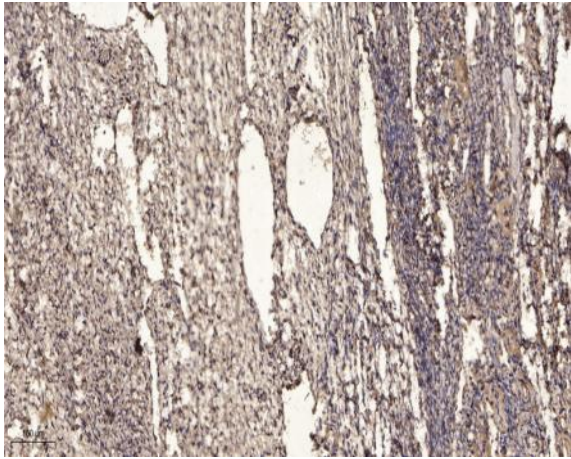
Catalog No :	YT7636
Reactivity :	Human;Mouse;Rat
Applications :	WB;ELISA;IHC
Target :	MRI
Gene Name :	MRI C7orf49
Protein Name :	MRI
Human Gene Id :	78996
Human Swiss Prot No :	Q9BWK5
Mouse Gene Id :	78412
Mouse Swiss Prot No :	Q8BHZ5
Rat Gene Id :	500077
Rat Swiss Prot No :	Q6AYH4
Immunogen :	Synthesized peptide derived from human MRI AA range: 40-90
Specificity :	This antibody detects endogenous levels of MRI at Human/Mouse/Rat
Formulation :	Liquid in PBS containing 50% glycerol, 0.5% BSA and 0.02% sodium azide.
Source :	Polyclonal, Rabbit,IgG
Dilution :	WB 1:500-2000;IHC 1:50-300; ELISA 2000-20000
Purification :	The antibody was affinity-purified from rabbit antiserum by affinity-chromatography using epitope-specific immunogen.

Concentration :	1 mg/ml
Storage Stability :	-15°C to -25°C/1 year(Do not lower than -25°C)
Molecularweight :	17kD
Function :	function:May act as a regulator of proteasome.,
Subcellular Location :	[Isoform 1]: Cytoplasm . Nucleus . Chromosome . Nuclear localization may depend upon interaction with XRCC5/Ku80 and XRCC6/Ku70 heterodimer (PubMed:24610814). Localizes to DNA damage sites (PubMed:27063109). . ; [Isoform 3]: Cytoplasm . Some nuclear localization may be due to passive diffusion. . ; [Isoform 4]: Cytoplasm . Nucleus . Nuclear localization may depend upon interaction with XRCC5/Ku80 and XRCC6/Ku70 heterodimer and increases upon etoposide treatment. .
Sort :	10215
No4 :	1
Host :	Rabbit
Modifications :	Unmodified

Products Images



Western blot analysis of lysates from 293T cells, primary antibody was diluted at 1:1000, 4° over night



Immunohistochemical analysis of paraffin-embedded human oophoroma. 1, Antibody was diluted at 1:200(4° overnight). 2, Tris-EDTA,pH9.0 was used for antigen retrieval. 3,Secondary antibody was diluted at 1:200(room temperature, 45min).