

## PEX5R rabbit pAb

|                              |   |
|------------------------------|---|
| <b>Catalog No :</b>          | YT7634  |
| <b>Reactivity :</b>          | Human;Mouse;Rat   |
| <b>Applications :</b>        | WB;IHC  |
| <b>Target :</b>              | PEX5R   |
| <b>Fields :</b>              | >>Peroxisome  |
| <b>Gene Name :</b>           | PEX5L PEX5R PXR2  |
| <b>Protein Name :</b>        | PEX5R   |
| <b>Human Gene Id :</b>       | 51555   |
| <b>Human Swiss Prot No :</b> | Q8IYB4  |
| <b>Mouse Gene Id :</b>       | 58869   |
| <b>Mouse Swiss Prot No :</b> | Q8C437  |
| <b>Rat Gene Id :</b>         | 286937  |
| <b>Rat Swiss Prot No :</b>   | Q925N3  |
| <b>Immunogen :</b>           | Synthesized peptide derived from human PEX5R AA range: 267-317          |
| <b>Specificity :</b>         | This antibody detects endogenous levels of PEX5R at Human/Mouse/Rat     |
| <b>Formulation :</b>         | Liquid in PBS containing 50% glycerol, 0.5% BSA and 0.02% sodium azide. |
| <b>Source :</b>              | Polyclonal, Rabbit,IgG  |
| <b>Dilution :</b>            | WB 1:500-2000;IHC 1:50-300  |
| <b>Purification :</b>        | The antibody was affinity-purified from rabbit antiserum by affinity-   |

chromatography using epitope-specific immunogen.

**Concentration :** 1 mg/ml

**Storage Stability :** -15°C to -25°C/1 year(Do not lower than -25°C)

**Molecularweight :** 69kD

**Function :** similarity:Belongs to the peroxisomal targeting signal receptor family.,similarity:Contains 5 TPR repeats.,subcellular location:Some fraction is membrane associated via its interaction with RAB8B.,subunit:Interacts with RAB8B (By similarity). May interact with the C-terminal PTS1-type tripeptide peroxisomal targeting signal (SKL-type); the relevance of such interaction is however unclear.,tissue specificity:Mainly expressed in brain. Also expressed in pancreas, testis and pituitary.,

**Subcellular Location :** Cytoplasm . Membrane ; Peripheral membrane protein . Some fraction is membrane associated via its interaction with RAB8B. .

**Expression :** Mainly expressed in brain. Also expressed in pancreas, testis and pituitary.

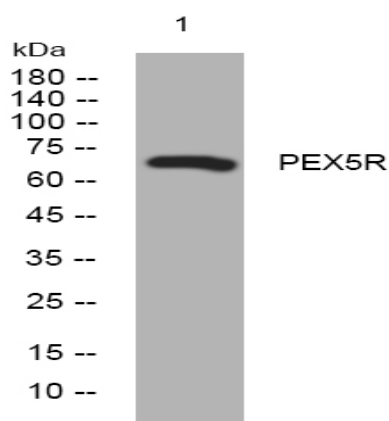
**Sort :** 11848

**No4 :** 1

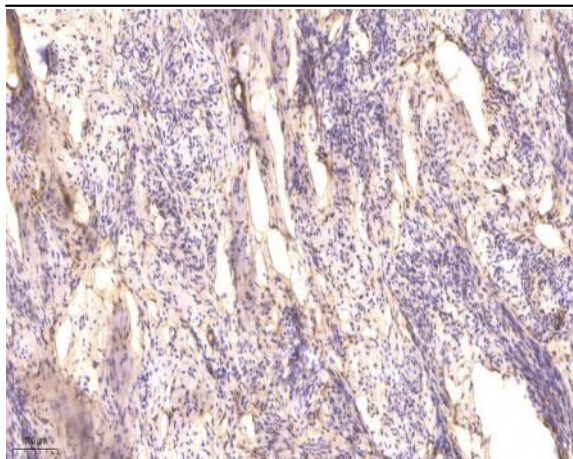
**Host :** Rabbit

**Modifications :** Unmodified

## Products Images



Western blot analysis of lysates from HeLa cells, primary antibody was diluted at 1:1000, 4° over night



Immunohistochemical analysis of paraffin-embedded human cervical carcinoma. 1, Antibody was diluted at 1:200(4° overnight). 2, Tris-EDTA,pH9.0 was used for antigen retrieval. 3,Secondary antibody was diluted at 1:200(room temperature, 45min).