

TRI11 rabbit pAb

| | |
|------------------------------|---|
| Catalog No : | YT7631 |
| Reactivity : | Human;Mouse;Rat |
| Applications : | WB |
| Target : | TRI11 |
| Gene Name : | TRIM11 RNF92 |
| Protein Name : | TRI11 |
| Human Gene Id : | 81559 |
| Human Swiss Prot No : | Q96F44 |
| Mouse Gene Id : | 338364 |
| Mouse Swiss Prot No : | Q99PQ2 |
| Rat Swiss Prot No : | B1H278 |
| Immunogen : | Synthesized peptide derived from human TRI11 AA range: 128-178 |
| Specificity : | This antibody detects endogenous levels of TRI11 at Human/Mouse/Rat |
| Formulation : | Liquid in PBS containing 50% glycerol, 0.5% BSA and 0.02% sodium azide. |
| Source : | Polyclonal, Rabbit,IgG |
| Dilution : | WB 1[?]500-2000 |
| Purification : | The antibody was affinity-purified from rabbit antiserum by affinity-chromatography using epitope-specific immunogen. |
| Concentration : | 1 mg/ml |

Storage Stability : -15°C to -25°C/1 year(Do not lower than -25°C)

Molecularweight : 51kD

Background : The protein encoded by this gene is a member of the tripartite motif (TRIM) family. The TRIM motif includes three zinc-binding domains, a RING, a B-box type 1 and a B-box type 2, and a coiled-coil region. This protein localizes to the nucleus and the cytoplasm. Its function has not been identified. [provided by RefSeq, Jul 2008],

Function : domain:The coiled-coil domain and the B30.2 domain are both necessary for interaction with humanin.,function:May have E3 ubiquitin ligase activity. May contribute to the regulation of the intracellular level of humanin or humanin-containing proteins through the proteasomal degradation pathway.,similarity:Belongs to the TRIM/RBCC family.,similarity:Contains 1 B box-type zinc finger.,similarity:Contains 1 B30.2/SPRY domain.,similarity:Contains 1 RING-type zinc finger.,subunit:Binds cytoplasmic tail of integrin alpha-1. Interacts with the humanin peptide.,tissue specificity:Ubiquitous.,

Subcellular Location : Cytoplasm. Nucleus.

Expression : Ubiquitous.

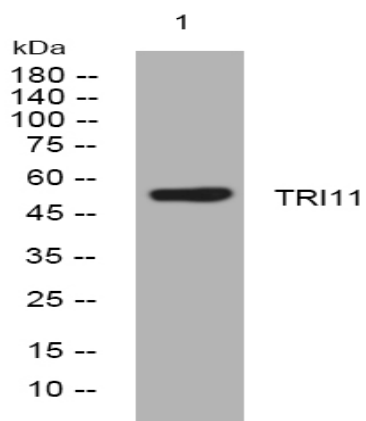
Sort : 23522

No4 : 1

Host : Rabbit

Modifications : Unmodified

Products Images



Western blot analysis of lysates from HpeG2 cells, primary antibody was diluted at 1:1000, 4° over night