

PGM2L rabbit pAb

Catalog No :	YT7627
Reactivity :	Human;Mouse
Applications :	WB;ELISA;IHC
Target :	PGM2L
Fields :	>>Starch and sucrose metabolism;>>Metabolic pathways
Gene Name :	PGM2L1 BM32A
Protein Name :	PGM2L
Human Gene Id :	283209
Human Swiss Prot No :	Q6PCE3
Mouse Gene Id :	70974
Mouse Swiss Prot No :	Q8CAA7
Immunogen :	Synthesized peptide derived from human PGM2L AA range: 80-130
Specificity :	This antibody detects endogenous levels of PGM2L at Human/Mouse
Formulation :	Liquid in PBS containing 50% glycerol, 0.5% BSA and 0.02% sodium azide.
Source :	Polyclonal, Rabbit,IgG
Dilution :	WB 1:500-2000;IHC 1:50-300; ELISA 2000-20000
Purification :	The antibody was affinity-purified from rabbit antiserum by affinity-chromatography using epitope-specific immunogen.
Concentration :	1 mg/ml

Storage Stability : -15°C to -25°C/1 year (Do not lower than -25°C)

Molecularweight : 68kD

Function : catalytic activity:3-phospho-D-glyceroyl phosphate + alpha-D-glucose 1-phosphate = 3-phospho-D-glycerate + alpha-D-glucose 1,6-bisphosphate.,function:Glucose 1,6-bisphosphate synthase using 1,3-bisphosphoglycerate as a phosphate donor and a series of 1-phosphate sugars as acceptors, including glucose 1-phosphate, mannose 1-phosphate, ribose 1-phosphate and deoxyribose 1-phosphate. 5 or 6-phosphosugars are bad substrates, with the exception of glucose 6-phosphate. Also synthesizes ribose 1,5-bisphosphate. Has only low phosphopentomutase and phosphoglucomutase activities.,similarity:Belongs to the phosphohexose mutase family.,

Subcellular Location : Cytoplasm, cytosol .

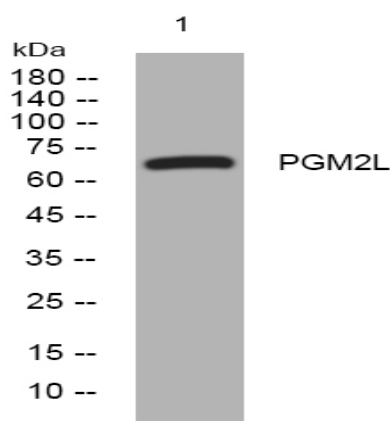
Sort : 11870

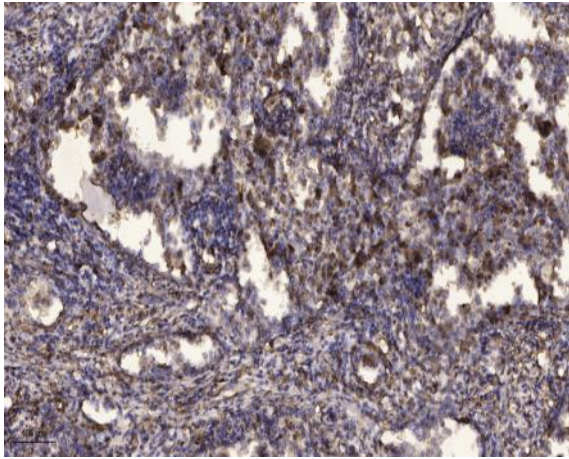
No4 : 1

Host : Rabbit

Modifications : Unmodified

Products Images





Immunohistochemical analysis of paraffin-embedded human Squamous cell carcinoma of lung. 1, Antibody was diluted at 1:200(4° overnight). 2, Tris-EDTA,pH9.0 was used for antigen retrieval. 3,Secondary antibody was diluted at 1:200(room temperature, 45min).