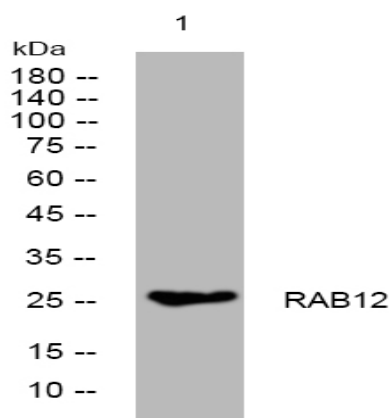


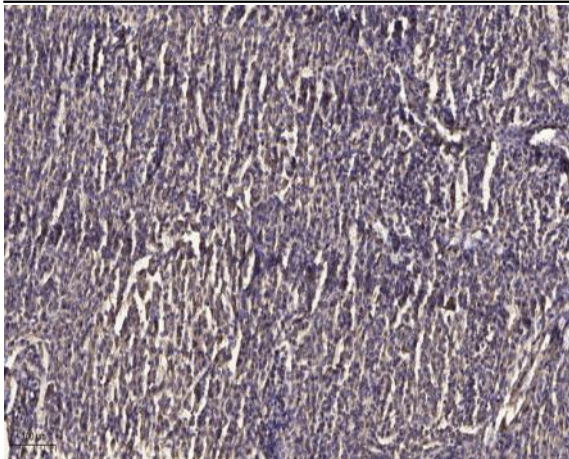
RAB12 rabbit pAb

Catalog No :	YT7626
Reactivity :	Human;Mouse;Rat
Applications :	WB;ELISA;IHC
Target :	RAB12
Gene Name :	RAB12
Protein Name :	RAB12
Human Gene Id :	201475
Human Swiss Prot No :	Q6IQ22
Mouse Gene Id :	19328
Mouse Swiss Prot No :	P35283
Rat Gene Id :	25530
Rat Swiss Prot No :	P35284
Immunogen :	Synthesized peptide derived from human RAB12 AA range: 186-236
Specificity :	This antibody detects endogenous levels of RAB12 at Human/Mouse/Rat
Formulation :	Liquid in PBS containing 50% glycerol, 0.5% BSA and 0.02% sodium azide.
Source :	Polyclonal, Rabbit,IgG
Dilution :	WB 1:500-2000;IHC 1:50-300; ELISA 2000-20000
Purification :	The antibody was affinity-purified from rabbit antiserum by affinity-chromatography using epitope-specific immunogen.

Concentration :	1 mg/ml
Storage Stability :	-15°C to -25°C/1 year(Do not lower than -25°C)
Molecularweight :	27kD
Function :	caution:Could be the product of a pseudogene.,sequence caution:Intron retention.,similarity:Belongs to the small GTPase superfamily. Rab family.,
Subcellular Location :	Recycling endosome membrane ; Lipid-anchor ; Cytoplasmic side . Lysosome membrane ; Lipid-anchor ; Cytoplasmic side . Golgi apparatus membrane . Cytoplasmic vesicle, autophagosome .
Sort :	13242
No4 :	1
Host :	Rabbit
Modifications :	Unmodified

Products Images





Immunohistochemical analysis of paraffin-embedded human meningioma. 1, Antibody was diluted at 1:200(4 ° overnight). 2, Tris-EDTA,pH9.0 was used for antigen retrieval. 3,Secondary antibody was diluted at 1:200(room temperature, 45min).