

## JOS2 rabbit pAb

<b>Catalog No :</b>	YT7614
<b>Reactivity :</b>	Human;Mouse
<b>Applications :</b>	WB;IHC
<b>Target :</b>	JOS2
<b>Gene Name :</b>	JOSD2 SBBI54
<b>Protein Name :</b>	JOS2
<b>Human Gene Id :</b>	126119
<b>Human Swiss Prot No :</b>	Q8TAC2
<b>Mouse Gene Id :</b>	66124
<b>Mouse Swiss Prot No :</b>	Q9CR30
<b>Immunogen :</b>	Synthesized peptide derived from human JOS2 AA range: 62-112
<b>Specificity :</b>	This antibody detects endogenous levels of JOS2 at Human/Mouse
<b>Formulation :</b>	Liquid in PBS containing 50% glycerol, 0.5% BSA and 0.02% sodium azide.
<b>Source :</b>	Polyclonal, Rabbit,IgG
<b>Dilution :</b>	WB 1:500-2000;IHC 1:50-300
<b>Purification :</b>	The antibody was affinity-purified from rabbit antiserum by affinity-chromatography using epitope-specific immunogen.
<b>Concentration :</b>	1 mg/ml
<b>Storage Stability :</b>	-15°C to -25°C/1 year(Do not lower than -25°C)

**Molecularweight :** 21kD

**Background :** This gene encodes a protein containing a Josephin domain. Josephin domain-containing proteins are deubiquitinating enzymes which catalyze the hydrolysis of the bond between the C-terminal glycine of the ubiquitin peptide and protein substrates. Alternatively spliced transcript variants encoding multiple isoforms have been observed for this gene. [provided by RefSeq, Jul 2012],

**Function :** similarity:Contains 1 Josephin domain.,

**Subcellular Location :** Cytoplasm, cytosol .

**Tag :** hot

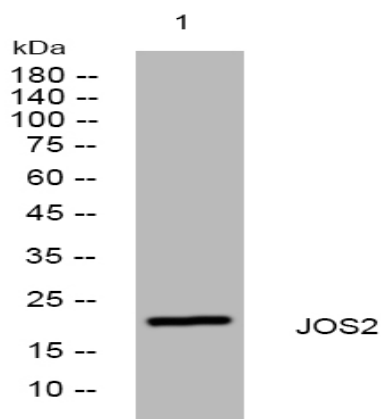
**Sort :** 8811

**No4 :** 1

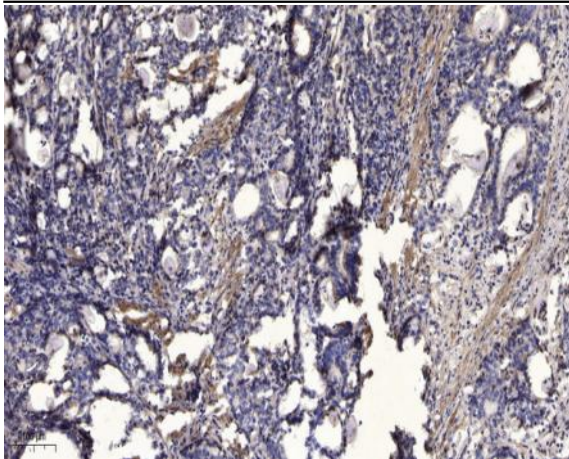
**Host :** Rabbit

**Modifications :** Unmodified

## Products Images



Western blot analysis of lysates from DU145 cells, primary antibody was diluted at 1:1000, 4° over night



Immunohistochemical analysis of paraffin-embedded human Gastric adenocarcinoma. 1, Antibody was diluted at 1:200(4 ° overnight). 2, Tris-EDTA,pH9.0 was used for antigen retrieval. 3,Secondary antibody was diluted at 1:200(room temperature, 45min).