

## LRRN2 rabbit pAb

<b>Catalog No :</b>	YT7610
<b>Reactivity :</b>	Human
<b>Applications :</b>	WB;ELISA;IHC
<b>Target :</b>	LRRN2
<b>Gene Name :</b>	LRRN2 GAC1 LRRN5 UNQ256/PRO293
<b>Protein Name :</b>	LRRN2
<b>Human Gene Id :</b>	10446
<b>Human Swiss Prot No :</b>	O75325
<b>Immunogen :</b>	Synthesized peptide derived from human LRRN2 AA range: 296-346
<b>Specificity :</b>	This antibody detects endogenous levels of LRRN2 at Human
<b>Formulation :</b>	Liquid in PBS containing 50% glycerol, 0.5% BSA and 0.02% sodium azide.
<b>Source :</b>	Polyclonal, Rabbit,IgG
<b>Dilution :</b>	WB 1:500-2000;IHC 1:50-300; ELISA 2000-20000
<b>Purification :</b>	The antibody was affinity-purified from rabbit antiserum by affinity-chromatography using epitope-specific immunogen.
<b>Concentration :</b>	1 mg/ml
<b>Storage Stability :</b>	-15°C to -25°C/1 year(Do not lower than -25°C)
<b>Molecularweight :</b>	78kD
<b>Background :</b>	The protein encoded by this gene belongs to the leucine-rich repeat superfamily. This gene was found to be amplified and overexpressed in malignant gliomas. The encoded protein has homology with other proteins that function as cell-

adhesion molecules or as signal transduction receptors and is a candidate for the target gene in the 1q32.1 amplicon in malignant gliomas. Two alternatively spliced transcript variants encoding the same protein have been described for this gene. [provided by RefSeq, Jul 2008],

**Function :**

similarity:Contains 1 Ig-like C2-type (immunoglobulin-like) domain.,similarity:Contains 11 LRR (leucine-rich) repeats.,tissue specificity:Overamplified in malignant gliomas.,

**Subcellular Location :**

Membrane ; Single-pass type I membrane protein .

**Expression :**

Overamplified in malignant gliomas.

**Sort :**

9260

**No4 :**

1

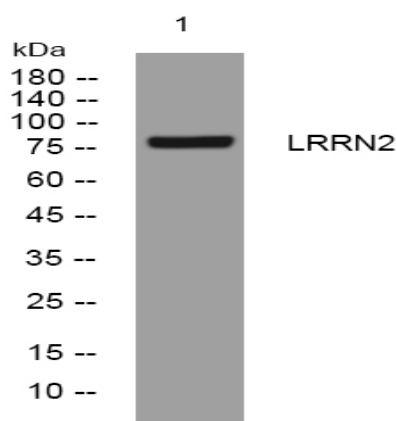
**Host :**

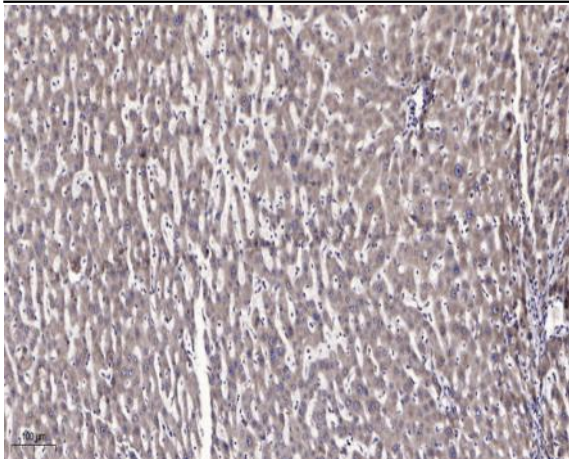
Rabbit

**Modifications :**

Unmodified

## Products Images





Immunohistochemical analysis of paraffin-embedded human liver cancer. 1, Antibody was diluted at 1:200(4° overnight). 2, Tris-EDTA,pH9.0 was used for antigen retrieval. 3,Secondary antibody was diluted at 1:200(room temperature, 45min).