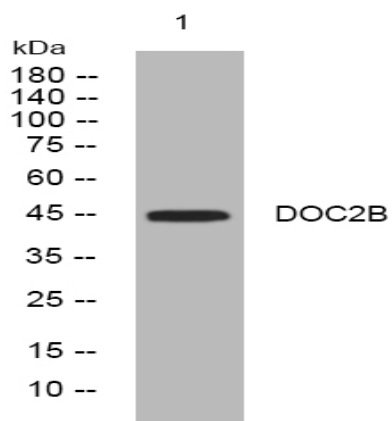


DOC2B rabbit pAb

Catalog No :	YT7602
Reactivity :	Human;Mouse;Rat
Applications :	WB
Target :	DOC2B
Gene Name :	DOC2B DOC2BL
Protein Name :	DOC2B
Human Gene Id :	8447
Human Swiss Prot No :	Q14184
Mouse Gene Id :	13447
Mouse Swiss Prot No :	P70169
Rat Gene Id :	81820
Rat Swiss Prot No :	P70610
Immunogen :	Synthesized peptide derived from human DOC2B AA range: 332-382
Specificity :	This antibody detects endogenous levels of DOC2B at Human/Mouse/Rat
Formulation :	Liquid in PBS containing 50% glycerol, 0.5% BSA and 0.02% sodium azide.
Source :	Polyclonal, Rabbit,IgG
Dilution :	WB 1:500-2000
Purification :	The antibody was affinity-purified from rabbit antiserum by affinity-chromatography using epitope-specific immunogen.

Concentration :	1 mg/ml
Storage Stability :	-15°C to -25°C/1 year(Do not lower than -25°C)
Molecularweight :	45kD
Background :	There are at least two protein isoforms of the Double C2 protein, namely alpha (DOC2A) and beta (DOC2B), which contain two C2-like domains. DOC2A and DOC2B are encoded by different genes; these genes are at times confused with the unrelated DAB2 gene which was initially named DOC-2. DOC2B is expressed ubiquitously and is suggested to be involved in Ca(2+)-dependent intracellular vesicle trafficking in various types of cells. [provided by RefSeq, Jul 2008],
Function :	domain:C2 domain 1 is involved in binding calcium and phospholipids.,function:May be involved in constitutive membrane trafficking including dynein-dependent intracellular vesicle transport. In vitro, binds calcium and phospholipids.,similarity:Contains 2 C2 domains.,subunit:Interacts with cytoplasmic dynein light chain TCTEL1/TCTEX1.,tissue specificity:Widely expressed with highest levels in brain and kidney.,
Subcellular Location :	Cytoplasm. Cytoplasmic granule . Cell membrane ; Peripheral membrane protein . Translocates to the plasma membrane in a calcium-dependent manner. .
Expression :	Widely expressed with highest levels in brain and kidney. Expressed in pancreatic islet cells (at protein level).
Sort :	5211
No4 :	1
Host :	Rabbit
Modifications :	Unmodified

Products Images



Western blot analysis of lysates from VEC cells, primary antibody was diluted at 1:1000, 4° over night