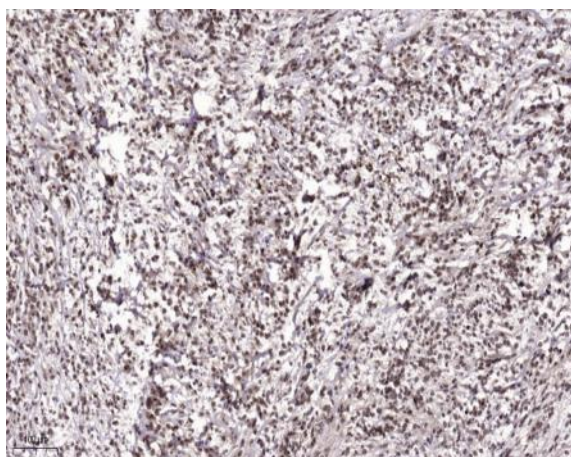


MT1H rabbit pAb

Catalog No :	YT7601
Reactivity :	Human
Applications :	IHC;IF
Target :	MT1H
Fields :	>>Mineral absorption
Gene Name :	MT1H
Protein Name :	MT1H
Human Gene Id :	4496
Human Swiss Prot No :	P80294
Immunogen :	Synthesized peptide derived from human MT1H AA range: 6-56
Specificity :	This antibody detects endogenous levels of MT1H at Human
Formulation :	Liquid in PBS containing 50% glycerol, 0.5% BSA and 0.02% sodium azide.
Source :	Polyclonal, Rabbit,IgG
Dilution :	IHC 1:50-200. IF 1:50-200
Purification :	The antibody was affinity-purified from rabbit antiserum by affinity-chromatography using epitope-specific immunogen.
Concentration :	1 mg/ml
Storage Stability :	-15°C to -25°C/1 year(Do not lower than -25°C)
Molecularweight :	7kD

Function :	domain:Class I metallothioneins contain 2 metal-binding domains: four divalent ions are chelated within cluster A of the alpha domain and are coordinated via cysteinyl thiolate bridges to 11 cysteine ligands. Cluster B, the corresponding region within the beta domain, can ligate three divalent ions to 9 cysteines.,function:Metallothioneins have a high content of cysteine residues that bind various heavy metals; these proteins are transcriptionally regulated by both heavy metals and glucocorticoids.,similarity:Belongs to the metallothionein superfamily. Type 1 family.,subunit:Monomer.,
Subcellular Location :	nucleus,cytoplasm,perinuclear region of cytoplasm,
Sort :	10310
No4 :	1
Host :	Rabbit
Modifications :	Unmodified

Products Images



Immunohistochemical analysis of paraffin-embedded human Colon cancer. 1, Antibody was diluted at 1:200(4° overnight). 2, Tris-EDTA,pH9.0 was used for antigen retrieval. 3,Secondary antibody was diluted at 1:200(room temperature, 45min).