

## JADE3 rabbit pAb

|                              |   |
|------------------------------|---|
| <b>Catalog No :</b>          | YT7743  |
| <b>Reactivity :</b>          | Human;Mouse   |
| <b>Applications :</b>        | WB;IHC  |
| <b>Target :</b>              | JADE3   |
| <b>Gene Name :</b>           | PHF16 JADE3 KIAA0215  |
| <b>Protein Name :</b>        | JADE3   |
| <b>Human Gene Id :</b>       | 9767  |
| <b>Human Swiss Prot No :</b> | Q92613  |
| <b>Mouse Gene Id :</b>       | 382207  |
| <b>Mouse Swiss Prot No :</b> | Q6IE82  |
| <b>Immunogen :</b>           | Synthesized peptide derived from human JADE3 AA range: 484-534  |
| <b>Specificity :</b>         | This antibody detects endogenous levels of JADE3 at Human/Mouse   |
| <b>Formulation :</b>         | Liquid in PBS containing 50% glycerol, 0.5% BSA and 0.02% sodium azide.   |
| <b>Source :</b>              | Polyclonal, Rabbit,IgG  |
| <b>Dilution :</b>            | WB 1:500-2000;IHC 1:50-300  |
| <b>Purification :</b>        | The antibody was affinity-purified from rabbit antiserum by affinity-chromatography using epitope-specific immunogen. |
| <b>Concentration :</b>       | 1 mg/ml   |
| <b>Storage Stability :</b>   | -15°C to -25°C/1 year(Do not lower than -25°C)  |

**Molecularweight :** 91kD

**Background :** This gene encodes a member of a family of large proteins containing PHD (plant homeo domain)-type zinc fingers. The encoded protein may be associated in a nuclear complex that functions in histone H4 acetylation. Alternative splicing results in multiple transcript variants encoding the same protein. [provided by RefSeq, Aug 2013],

**Function :** function:Component of the HBO1 complex which has a histone H4-specific acetyltransferase activity, a reduced activity toward histone H3 and is responsible for the bulk of histone H4 acetylation in vivo.,induction:By estradiol in estrogen-responsive breast cancer cells.,similarity:Belongs to the JADE family.,similarity:Contains 1 PHD-type zinc finger.,subunit:Component of the HBO1 complex composed at least of ING4 or ING5, MYTS2/HBO1, EAF6, and one of PHF15, PHF16 and PHF17.,tissue specificity:Ubiquitously expressed, with highest levels in placenta and uterus.,

**Subcellular Location :** histone acetyltransferase complex,

**Expression :** Ubiquitously expressed, with highest levels in placenta and uterus.

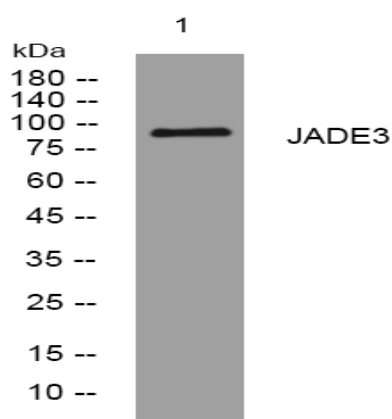
**Sort :** 8752

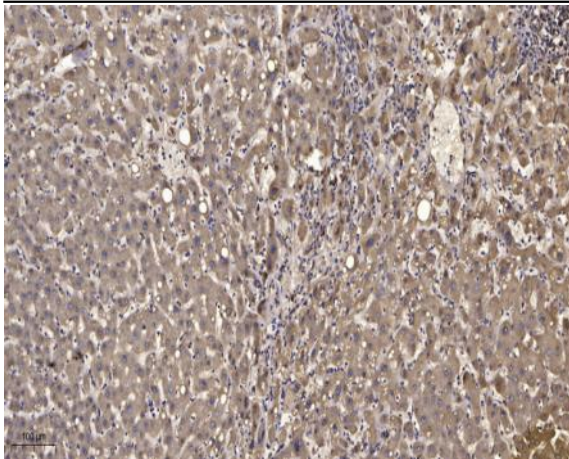
**No4 :** 1

**Host :** Rabbit

**Modifications :** Unmodified

## Products Images





Immunohistochemical analysis of paraffin-embedded human liver cancer. 1, Antibody was diluted at 1:200(4° overnight). 2, Tris-EDTA,pH9.0 was used for antigen retrieval. 3,Secondary antibody was diluted at 1:200(room temperature, 45min).