

KLF3 rabbit pAb

Catalog No :	YT7584
Reactivity :	Human;Mouse
Applications :	WB;ELISA;IHC
Target :	KLF3
Fields :	>>Transcriptional misregulation in cancer
Gene Name :	KLF3 BKLF
Protein Name :	KLF3
Human Gene Id :	51274
Human Swiss Prot No :	P57682
Mouse Gene Id :	16599
Mouse Swiss Prot No :	Q60980
Immunogen :	Synthesized peptide derived from human KLF3 AA range: 51-101
Specificity :	This antibody detects endogenous levels of KLF3 at Human/Mouse
Formulation :	Liquid in PBS containing 50% glycerol, 0.5% BSA and 0.02% sodium azide.
Source :	Polyclonal, Rabbit,IgG
Dilution :	WB 1:500-2000;IHC 1:50-300; ELISA 2000-20000
Purification :	The antibody was affinity-purified from rabbit antiserum by affinity-chromatography using epitope-specific immunogen.
Concentration :	1 mg/ml

Storage Stability : -15°C to -25°C/1 year (Do not lower than -25°C)

Molecularweight : 38kD

Function : function: Binds to the CACCC box of erythroid cell-expressed genes. May play a role in hematopoiesis. PTM: Sumoylated by SUMO1. Sumoylation is enhanced by PIAS1, PIAS2alpha and PIAS2beta, and PIAS4, but not by Pc2. Enhances transcriptional repression, but has no effect on DNA binding. Sumoylation on Lys-198 is the major site. similarity: Belongs to the krueppel C2H2-type zinc-finger protein family. similarity: Contains 3 C2H2-type zinc fingers. subunit: Monomer.

Subcellular Location : Nucleus .

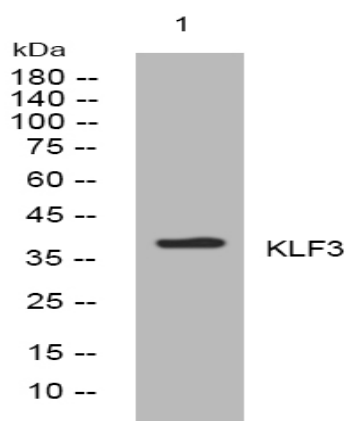
Sort : 8950

No4 : 1

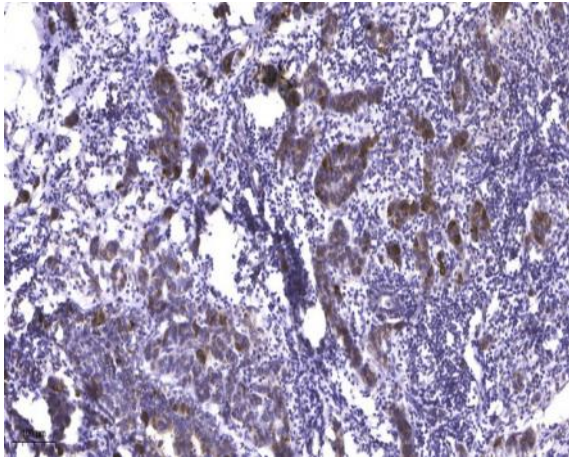
Host : Rabbit

Modifications : Unmodified

Products Images



Western blot analysis of lysates from A431 cells, primary antibody was diluted at 1:1000, 4°C over night



Immunohistochemical analysis of paraffin-embedded human Breast cancer. 1, Antibody was diluted at 1:200(4° overnight). 2, Tris-EDTA,pH9.0 was used for antigen retrieval. 3,Secondary antibody was diluted at 1:200(room temperature, 45min).