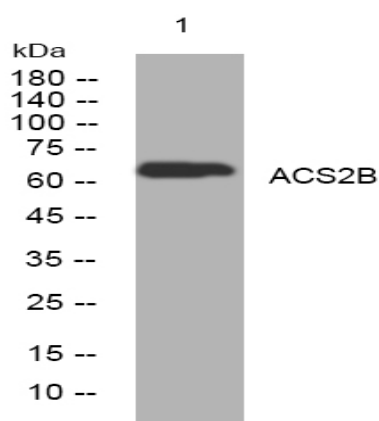


ACS2B rabbit pAb

Catalog No :	YT7580
Reactivity :	Human
Applications :	WB
Target :	ACS2B
Fields :	>>Butanoate metabolism;>>Metabolic pathways
Gene Name :	ACSM2B ACSM2 HYST1046
Protein Name :	ACS2B
Human Gene Id :	348158
Human Swiss Prot No :	Q68CK6
Immunogen :	Synthesized peptide derived from human ACS2B AA range: 264-314
Specificity :	This antibody detects endogenous levels of ACS2B at Human
Formulation :	Liquid in PBS containing 50% glycerol, 0.5% BSA and 0.02% sodium azide.
Source :	Polyclonal, Rabbit,IgG
Dilution :	WB 1[?]500-2000
Purification :	The antibody was affinity-purified from rabbit antiserum by affinity-chromatography using epitope-specific immunogen.
Concentration :	1 mg/ml
Storage Stability :	-15°C to -25°C/1 year(Do not lower than -25°C)
Molecularweight :	63kD

Function :	catalytic activity:ATP + an acid + CoA = AMP + diphosphate + an acyl-CoA.,cofactor:Magnesium or manganese.,enzyme regulation:Activated by monovalent cations, such as potassium, rubidium or ammonium.,function:Has medium-chain fatty acid:CoA ligase activity with broad substrate specificity (in vitro). Acts on acids from C(4) to C(11) and on the corresponding 3-hydroxy- and 2,3- or 3,4-unsaturated acids (in vitro).,similarity:Belongs to the ATP-dependent AMP-binding enzyme family.,subunit:Monomer.,tissue specificity:Detected in liver.,
Subcellular Location :	Mitochondrion .
Expression :	Detected in liver.
Sort :	1668
No4 :	1
Host :	Rabbit
Modifications :	Unmodified

Products Images



Western blot analysis of lysates from HCT116 cells, primary antibody was diluted at 1:1000, 4° over night