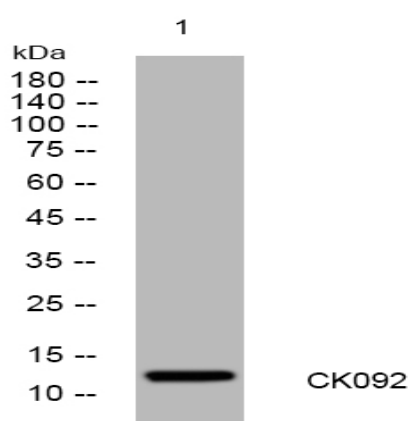


CK092 rabbit pAb

Catalog No :	YT7589
Reactivity :	Human
Applications :	WB
Target :	CK092
Gene Name :	C11orf92
Protein Name :	CK092
Human Swiss Prot No :	Q6ZS62
Immunogen :	Synthesized peptide derived from human CK092 AA range: 40-90
Specificity :	This antibody detects endogenous levels of CK092 at Human
Formulation :	Liquid in PBS containing 50% glycerol, 0.5% BSA and 0.02% sodium azide.
Source :	Polyclonal, Rabbit,IgG
Dilution :	WB 1:500-2000
Purification :	The antibody was affinity-purified from rabbit antiserum by affinity-chromatography using epitope-specific immunogen.
Concentration :	1 mg/ml
Storage Stability :	-15°C to -25°C/1 year(Do not lower than -25°C)
Molecularweight :	14kD
Background :	This gene encodes a transmembrane protein that localizes to granular structures, including crystalloid eosinophilic granules and other granular organelles. This gene, along with an overlapping opposite strand gene, has been implicated as a susceptibility locus for colorectal cancer. Alternative splicing of this gene results in multiple transcript variants. [provided by RefSeq, Nov 2014],

Subcellular Location :	Membrane ; Single-pass membrane protein . Co-localizes with crystalloid granules of eosinophils and granular organelles of mast cells, neutrophils, macrophages and dendritic cells.
Expression :	Expressed in gastrointestinal and immune tissue, as well as prostate, testis and ovary. Expressed in lamina propria and eosinophils but not in epithelial cells. Expression is greater in benign adjacent tissues than in colon tumors.
Sort :	4028
No4 :	1
Host :	Rabbit
Modifications :	Unmodified

Products Images



Western blot analysis of lysates from HeLa cells, primary antibody was diluted at 1:1000, 4° over night