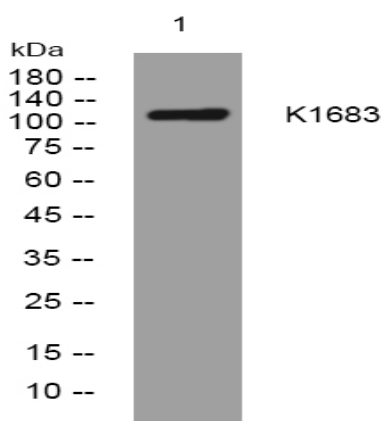


K1683 rabbit pAb

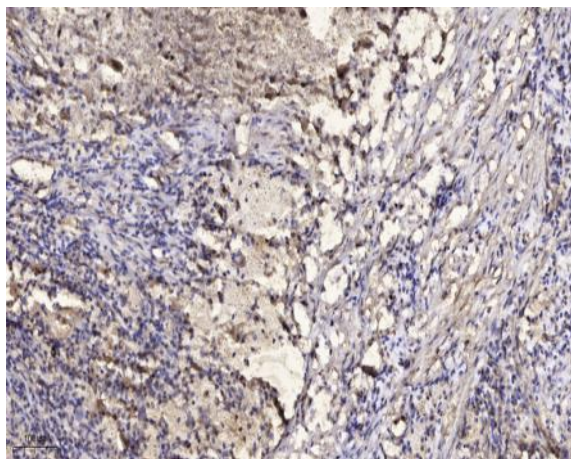
Catalog No :	YT7575
Reactivity :	Human;Mouse
Applications :	WB;IHC
Target :	K1683
Gene Name :	KIAA1683
Protein Name :	K1683
Human Gene Id :	80726
Human Swiss Prot No :	Q9H0B3
Immunogen :	Synthesized peptide derived from human K1683 AA range: 328-378
Specificity :	This antibody detects endogenous levels of K1683 at Human
Formulation :	Liquid in PBS containing 50% glycerol, 0.5% BSA and 0.02% sodium azide.
Source :	Polyclonal, Rabbit,IgG
Dilution :	WB 1:500-2000;IHC 1:50-300
Purification :	The antibody was affinity-purified from rabbit antiserum by affinity-chromatography using epitope-specific immunogen.
Concentration :	1 mg/ml
Storage Stability :	-15°C to -25°C/1 year(Do not lower than -25°C)
Molecularweight :	130kD
Function :	PTM:Phosphorylated upon DNA damage, probably by ATM or ATR.,sequence caution:Wrong choice of frame.,similarity:Contains 6 IQ domains.,

Subcellular Location :	nucleus,mitochondrion,
Sort :	8824
No4 :	1
Host :	Rabbit
Modifications :	Unmodified

Products Images



Western blot analysis of lysates from DU145 cells, primary antibody was diluted at 1:1000, 4° over night



Immunohistochemical analysis of paraffin-embedded human Squamous cell carcinoma of lung. 1, Antibody was diluted at 1:200(4° overnight). 2, Tris-EDTA,pH9.0 was used for antigen retrieval. 3,Secondary antibody was diluted at 1:200(room temperature, 45min).