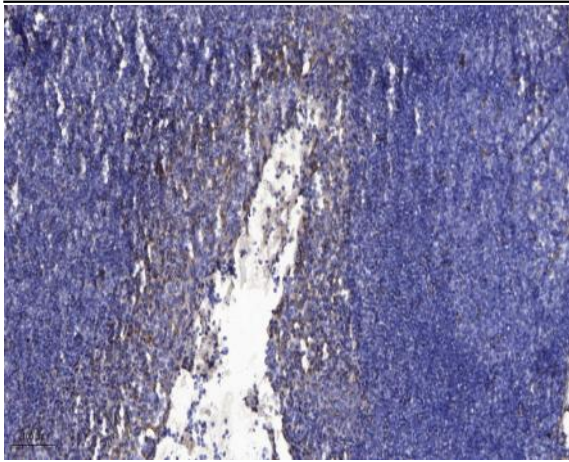


SLIB rabbit pAb

Catalog No :	YT7571
Reactivity :	Human;Mouse;Rat
Applications :	IHC;IF
Target :	SLIB
Fields :	>>Neuroactive ligand-receptor interaction;>>Growth hormone synthesis, secretion and action
Gene Name :	GHRH GHRF
Protein Name :	SLIB
Human Gene Id :	2691
Human Swiss Prot No :	P01286
Mouse Gene Id :	14601
Mouse Swiss Prot No :	P16043
Rat Gene Id :	29446
Rat Swiss Prot No :	P09916
Immunogen :	Synthesized peptide derived from human SLIB AA range: 43-93
Specificity :	This antibody detects endogenous levels of SLIB at Human/Mouse/Rat
Formulation :	Liquid in PBS containing 50% glycerol, 0.5% BSA and 0.02% sodium azide.
Source :	Polyclonal, Rabbit,IgG
Dilution :	IHC 1:50-200. IF 1:50-200

Purification :	The antibody was affinity-purified from rabbit antiserum by affinity-chromatography using epitope-specific immunogen.
Concentration :	1 mg/ml
Storage Stability :	-15°C to -25°C/1 year(Do not lower than -25°C)
Molecularweight :	12kD
Background :	<p>This gene encodes a member of the glucagon family of proteins. The encoded preproprotein is produced in the hypothalamus and cleaved to generate the mature factor, known as somatoliberin, which acts to stimulate growth hormone release from the pituitary gland. Variant receptors for somatoliberin have been found in several types of tumors, and antagonists of these receptors can inhibit the growth of the tumors. Defects in this gene are a cause of dwarfism, while hypersecretion of the encoded protein is a cause of gigantism. Alternative splicing results in multiple transcript variants, at least one of which encodes a preproprotein that is proteolytically processed. [provided by RefSeq, Jan 2016],</p>
Function :	<p>function:GRF is released by the hypothalamus and acts on the adenohypophyse to stimulate the secretion of growth hormone.,online information:Growth hormone releasing hormone entry,pharmaceutical:Available under the names Groliberin (Pharmacia) or Somatrel (Ferring). Also available under the name Geref (Serono). Geref is a synthetic acetylated form of residues 1 to 29 of GHRH. Used for the treatment of growth hormone deficiency.,similarity:Belongs to the glucagon family.,</p>
Subcellular Location :	Secreted.
Sort :	16371
No4 :	1
Host :	Rabbit
Modifications :	Unmodified

Products Images



Immunohistochemical analysis of paraffin-embedded human tonsil. 1, Antibody was diluted at 1:200(4 ° overnight). 2, Tris-EDTA,pH9.0 was used for antigen retrieval. 3,Secondary antibody was diluted at 1:200(room temperature, 30min).