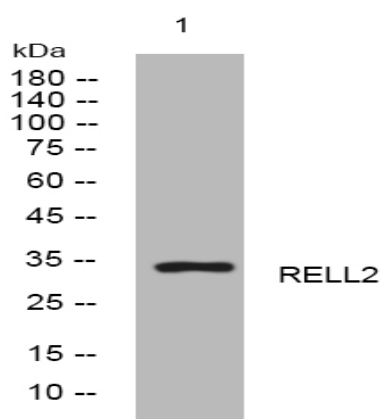


RELL2 rabbit pAb

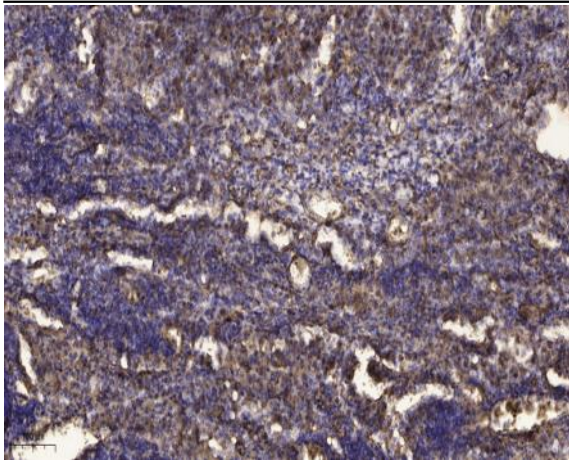
Catalog No :	YT7562
Reactivity :	Human;Mouse;Rat
Applications :	WB;ELISA;IHC
Target :	RELL2
Gene Name :	RELL2 C5orf16 UNQ9423/PRO34565
Protein Name :	RELL2
Human Gene Id :	285613
Human Swiss Prot No :	Q8NC24
Mouse Gene Id :	225392
Mouse Swiss Prot No :	Q8BRJ3
Rat Gene Id :	361313
Rat Swiss Prot No :	Q5FVJ4
Immunogen :	Synthesized peptide derived from human RELL2 AA range: 45-95
Specificity :	This antibody detects endogenous levels of RELL2 at Human/Mouse/Rat
Formulation :	Liquid in PBS containing 50% glycerol, 0.5% BSA and 0.02% sodium azide.
Source :	Polyclonal, Rabbit,IgG
Dilution :	WB 1:500-2000;IHC 1:50-300; ELISA 2000-20000
Purification :	The antibody was affinity-purified from rabbit antiserum by affinity-chromatography using epitope-specific immunogen.

Concentration :	1 mg/ml
Storage Stability :	-15°C to -25°C/1 year(Do not lower than -25°C)
Molecularweight :	33kD
Function :	PTM:Phosphorylated in vitro by OXSR1.,similarity:Belongs to the RELT family.,subunit:Interacts with RELT, RELL1 and OXSR1.,tissue specificity:Primarily expressed in spleen, thymus, testis, peripheral blood leukocytes, brain and placenta. Not detected in prostate, ovary, small intestine, colon, heart, lung, liver, skeletal muscle, kidney and pancreas.,
Subcellular Location :	Cell membrane ; Single-pass membrane protein .
Expression :	Primarily expressed in spleen, thymus, testis, peripheral blood leukocytes, brain and placenta. Not detected in prostate, ovary, small intestine, colon, heart, lung, liver, skeletal muscle, kidney and pancreas.
Sort :	14378
No4 :	1
Host :	Rabbit
Modifications :	Unmodified

Products Images



Western blot analysis of lysates from MCF-7 cells, primary antibody was diluted at 1:1000, 4° over night



Immunohistochemical analysis of paraffin-embedded human Squamous cell carcinoma of lung. 1, Antibody was diluted at 1:200(4° overnight). 2, Tris-EDTA,pH9.0 was used for antigen retrieval. 3,Secondary antibody was diluted at 1:200(room temperature, 45min).