

REXO4 rabbit pAb

Catalog No :	YT7560
Reactivity :	Human;Mouse
Applications :	WB;IHC
Target :	REXO4
Gene Name :	REXO4 PMC2 XPMC2H
Protein Name :	REXO4
Human Gene Id :	57109
Human Swiss Prot No :	Q9GZR2
Mouse Gene Id :	227656
Mouse Swiss Prot No :	Q6PAQ4
Immunogen :	Synthesized peptide derived from human REXO4 AA range: 312-362
Specificity :	This antibody detects endogenous levels of REXO4 at Human/Mouse
Formulation :	Liquid in PBS containing 50% glycerol, 0.5% BSA and 0.02% sodium azide.
Source :	Polyclonal, Rabbit,IgG
Dilution :	WB 1:500-2000;IHC 1:50-300
Purification :	The antibody was affinity-purified from rabbit antiserum by affinity-chromatography using epitope-specific immunogen.
Concentration :	1 mg/ml
Storage Stability :	-15°C to -25°C/1 year(Do not lower than -25°C)

Molecularweight : 46kD

Function : similarity:Belongs to the REXO4 family.,similarity:Contains 1 exonuclease domain.,subunit:Can bind ESR1 and ESR2. This interaction is abrogated by estrogen and augmented by tamoxifen treatment.,

Subcellular Location : Nucleus, nucleolus .

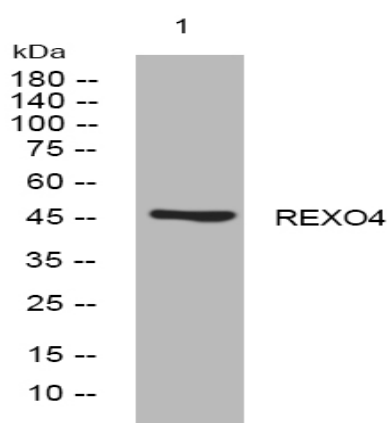
Sort : 14404

No4 : 1

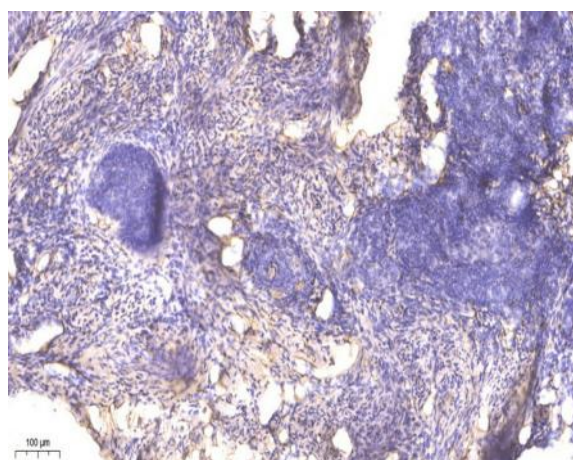
Host : Rabbit

Modifications : Unmodified

Products Images



Western blot analysis of lysates from SW480 cells, primary antibody was diluted at 1:1000, 4° over night



Immunohistochemical analysis of paraffin-embedded human cervical carcinoma. 1, Antibody was diluted at 1:200(4° overnight). 2, Tris-EDTA,pH9.0 was used for antigen retrieval. 3,Secondary antibody was diluted at 1:200(room temperature, 45min).