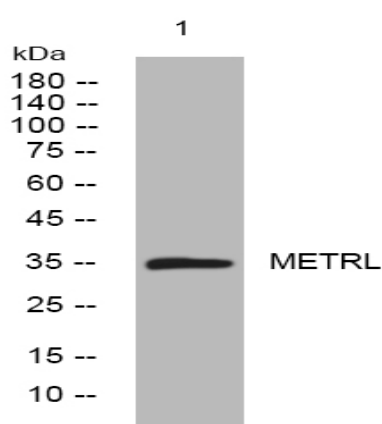


METRL rabbit pAb

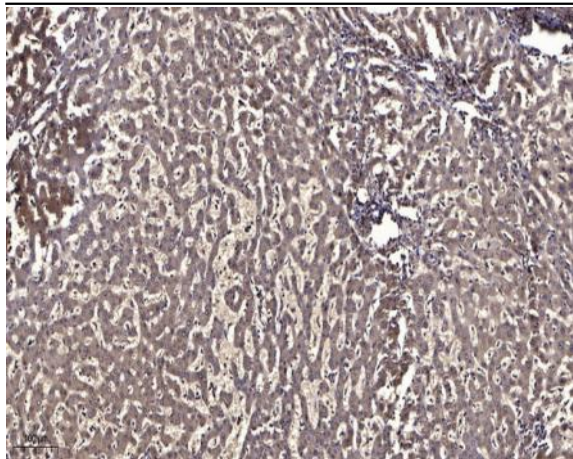
Catalog No :	YT7556
Reactivity :	Human;Mouse;Rat
Applications :	WB;IHC
Target :	METRL
Gene Name :	METRNL
Protein Name :	METRL
Human Gene Id :	284207
Human Swiss Prot No :	Q641Q3
Mouse Gene Id :	210029
Mouse Swiss Prot No :	Q8VE43
Rat Gene Id :	316842
Rat Swiss Prot No :	Q5RJL6
Immunogen :	Synthesized peptide derived from human METRL AA range: 78-128
Specificity :	This antibody detects endogenous levels of METRL at Human/Mouse/Rat
Formulation :	Liquid in PBS containing 50% glycerol, 0.5% BSA and 0.02% sodium azide.
Source :	Polyclonal, Rabbit,IgG
Dilution :	WB 1:500-2000;IHC 1:50-300
Purification :	The antibody was affinity-purified from rabbit antiserum by affinity-chromatography using epitope-specific immunogen.

Concentration :	1 mg/ml
Storage Stability :	-15°C to -25°C/1 year(Do not lower than -25°C)
Molecularweight :	34kD
Function :	similarity:Belongs to the meteorin family.,
Subcellular Location :	Secreted .
Expression :	Highly expressed in the skeletal muscle, in subcutaneous adipose tissue, epididymal white adipose tissue depots and heart. Also expressed in brown adipose tissues and kidney.
Tag :	hot
Sort :	1
No4 :	1
Host :	Rabbit
Modifications :	Unmodified

Products Images



Western blot analysis of lysates from HpeG2 cells, primary antibody was diluted at 1:1000, 4° over night



Immunohistochemical analysis of paraffin-embedded human liver cancer. 1, Antibody was diluted at 1:200(4° overnight). 2, Tris-EDTA,pH9.0 was used for antigen retrieval. 3,Secondary antibody was diluted at 1:200(room temperature, 45min).