

ROA3 rabbit pAb

Catalog No :	YT7548
Reactivity :	Human;Mouse;Rat
Applications :	WB;IHC
Target :	ROA3
Fields :	>>Spliceosome;>>Amyotrophic lateral sclerosis
Gene Name :	HNRNPA3 HNRPA3
Protein Name :	ROA3
Human Gene Id :	220988
Human Swiss Prot No :	P51991
Mouse Gene Id :	229279
Mouse Swiss Prot No :	Q8BG05
Rat Gene Id :	362152
Rat Swiss Prot No :	Q6URK4
Immunogen :	Synthesized peptide derived from human ROA3 AA range: 196-246
Specificity :	This antibody detects endogenous levels of ROA3 at Human/Mouse/Rat
Formulation :	Liquid in PBS containing 50% glycerol, 0.5% BSA and 0.02% sodium azide.
Source :	Polyclonal, Rabbit,IgG
Dilution :	WB 1:500-2000;IHC 1:50-300
Purification :	The antibody was affinity-purified from rabbit antiserum by affinity-

chromatography using epitope-specific immunogen.

Concentration : 1 mg/ml

Storage Stability : -15°C to -25°C/1 year (Do not lower than -25°C)

Molecularweight : 42kD

Function : caution: An older version of this entry represented the conceptual translation of what was thought to be HNRNPA3 but which was in fact a pseudogene (HNRPA3P1/FBRNP) located on chromosome 10., function: Plays a role in cytoplasmic trafficking of RNA. Binds to the cis-acting response element, A2RE. May be involved in pre-mRNA splicing., similarity: Contains 2 RRM (RNA recognition motif) domains., subcellular location: Component of ribonucleosomes., subunit: Identified in the spliceosome C complex, at least composed of AQR, ASCC3L1, C19orf29, CDC40, CDC5L, CRNKL1, DDX23, DDX41, DDX48, DDX5, DGCR14, DHX35, DHX38, DHX8, EFTUD2, FRG1, GPATC1, HNRPA1, HNRPA2B1, HNRNPA3, HNRPC, HNRPF, HNRPH1, HNRPK, HNRPM, HNRPR, HNRPU, KIAA1160, KIAA1604, LSM2, LSM3, MAGOH, MORG1, PABPC1, PLRG1, PNN, PPIE, PPIL1, PPIL3, PPWD1, PRPF19, PRPF4B, PRPF6, PRPF8, RALY, RBM22, RBM8A, RBMX, SART1, SF3A1, SF3A2, SF3A3, SF3B1, SF3

Subcellular Location : Nucleus . Component of ribonucleosomes.

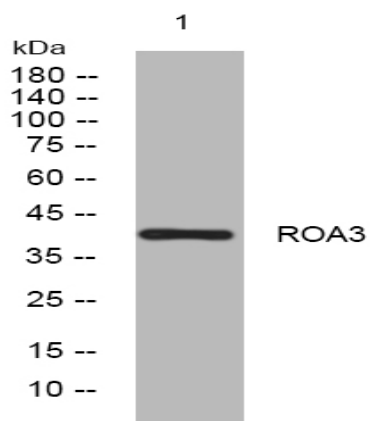
Sort : 14567

No4 : 1

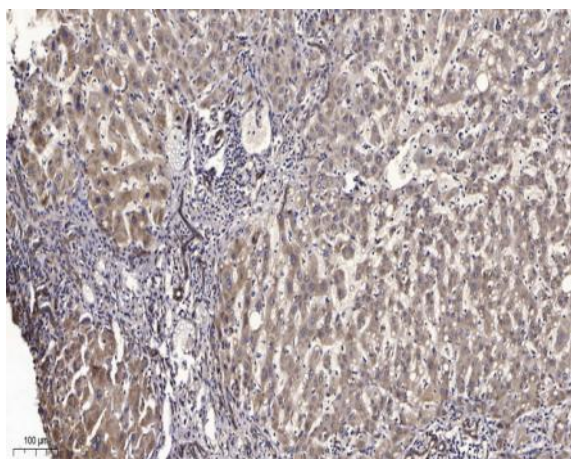
Host : Rabbit

Modifications : Unmodified

Products Images



Western blot analysis of lysates from MCF-7 cells, primary antibody was diluted at 1:1000, 4° over night



Immunohistochemical analysis of paraffin-embedded human liver cancer. 1, Antibody was diluted at 1:200(4° overnight). 2, Tris-EDTA,pH9.0 was used for antigen retrieval. 3,Secondary antibody was diluted at 1:200(room temperature, 45min).