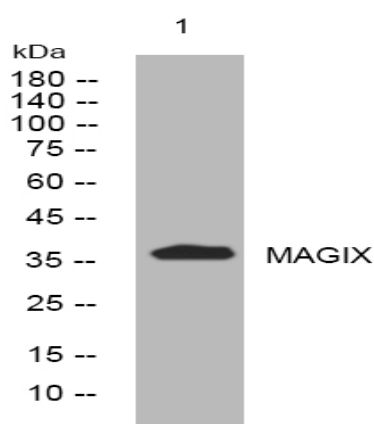


MAGIX rabbit pAb

Catalog No :	YT7546
Reactivity :	Human;Mouse;Rat
Applications :	WB
Target :	MAGIX
Gene Name :	MAGIX
Protein Name :	MAGIX
Human Gene Id :	79917
Human Swiss Prot No :	Q9H6Y5
Mouse Gene Id :	54634
Mouse Swiss Prot No :	Q4KL35
Rat Gene Id :	317379
Rat Swiss Prot No :	Q6AYQ0
Immunogen :	Synthesized peptide derived from human MAGIX AA range: 278-328
Specificity :	This antibody detects endogenous levels of MAGIX at Human/Mouse/Rat
Formulation :	Liquid in PBS containing 50% glycerol, 0.5% BSA and 0.02% sodium azide.
Source :	Polyclonal, Rabbit,IgG
Dilution :	WB 1:500-2000
Purification :	The antibody was affinity-purified from rabbit antiserum by affinity-chromatography using epitope-specific immunogen.

Concentration :	1 mg/ml
Storage Stability :	-15°C to -25°C/1 year(Do not lower than -25°C)
Molecularweight :	37kD
Function :	similarity:Contains 1 PDZ (DHR) domain.,
Sort :	9341
No4 :	1
Host :	Rabbit
Modifications :	Unmodified

Products Images



Western blot analysis of lysates from THP-1 cells, primary antibody was diluted at 1:1000, 4° over night