

**SOLH1 rabbit pAb**

<b>Catalog No :</b>	YT7544
<b>Reactivity :</b>	Human;Mouse
<b>Applications :</b>	WB;ELISA;IHC
<b>Target :</b>	SOLH1
<b>Gene Name :</b>	SOHLH1 C9orf157 NOHLH TEB2
<b>Protein Name :</b>	SOLH1
<b>Human Gene Id :</b>	402381
<b>Human Swiss Prot No :</b>	Q5JUK2
<b>Mouse Gene Id :</b>	227631
<b>Mouse Swiss Prot No :</b>	Q6IUP1
<b>Immunogen :</b>	Synthesized peptide derived from human SOLH1 AA range: 94-144
<b>Specificity :</b>	This antibody detects endogenous levels of SOLH1 at Human/Mouse
<b>Formulation :</b>	Liquid in PBS containing 50% glycerol, 0.5% BSA and 0.02% sodium azide.
<b>Source :</b>	Polyclonal, Rabbit,IgG
<b>Dilution :</b>	WB 1:500-2000;IHC 1:50-300; ELISA 2000-20000
<b>Purification :</b>	The antibody was affinity-purified from rabbit antiserum by affinity-chromatography using epitope-specific immunogen.
<b>Concentration :</b>	1 mg/ml
<b>Storage Stability :</b>	-15°C to -25°C/1 year(Do not lower than -25°C)

**Molecularweight :** 36kD

**Background :** This gene encodes one of testis-specific transcription factors which are essential for spermatogenesis, oogenesis and folliculogenesis. This gene is located on chromosome 9. Mutations in this gene are associated with nonobstructive azoospermia. Alternatively spliced transcript variants encoding different isoforms have been found for this gene. [provided by RefSeq, Aug 2013],

**Function :** function:Probable transcription factor required during spermatogenesis and oogenesis.,similarity:Contains 1 basic helix-loop-helix (bHLH) domain.,

**Subcellular Location :** Cytoplasm . Nucleus .

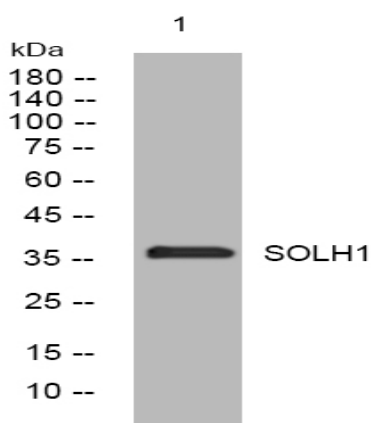
**Sort :** 16500

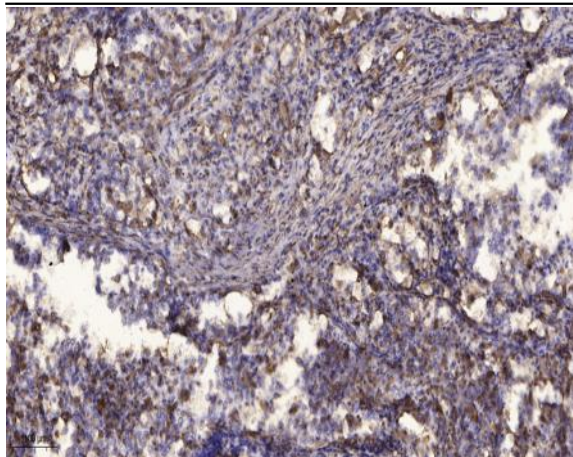
**No4 :** 1

**Host :** Rabbit

**Modifications :** Unmodified

## Products Images





Immunohistochemical analysis of paraffin-embedded human Squamous cell carcinoma of lung. 1, Antibody was diluted at 1:200(4° overnight). 2, Tris-EDTA,pH9.0 was used for antigen retrieval. 3,Secondary antibody was diluted at 1:200(room temperature, 45min).