

RFX6 rabbit pAb

Catalog No :	YT7531
Reactivity :	Human;Mouse
Applications :	WB;ELISA;IHC
Target :	RFX6
Fields :	>>Maturity onset diabetes of the young
Gene Name :	RFX6 RFXDC1
Protein Name :	RFX6
Human Gene Id :	222546
Human Swiss Prot No :	Q8HWS3
Mouse Gene Id :	320995
Mouse Swiss Prot No :	Q8C7R7
Immunogen :	Synthesized peptide derived from human RFX6 AA range: 264-314
Specificity :	This antibody detects endogenous levels of RFX6 at Human/Mouse
Formulation :	Liquid in PBS containing 50% glycerol, 0.5% BSA and 0.02% sodium azide.
Source :	Polyclonal, Rabbit,IgG
Dilution :	WB 1:500-2000;IHC 1:50-300; ELISA 2000-20000
Purification :	The antibody was affinity-purified from rabbit antiserum by affinity-chromatography using epitope-specific immunogen.
Concentration :	1 mg/ml

Storage Stability : -15°C to -25°C/1 year(Do not lower than -25°C)

Molecularweight : 102kD

Background : The nuclear protein encoded by this gene is a member of the regulatory factor X (RFX) family of transcription factors. Studies in mice suggest that this gene is specifically required for the differentiation of islet cells for the production of insulin, but not for the differentiation of pancreatic polypeptide-producing cells. It regulates the transcription factors involved in beta-cell maturation and function, thus, restricting the expression of the beta-cell differentiation and specification genes. Mutations in this gene are associated with Mitchell-Riley syndrome, which is characterized by neonatal diabetes with pancreatic hypoplasia, duodenal and jejunal atresia, and gall bladder agenesis.[provided by RefSeq, Sep 2010],

Function : similarity:Belongs to the RFX family.,

Subcellular Location : Nucleus .

Expression : Expressed in pancreas (PubMed:25497100). Expressed in pancreatic beta-cells (insulin-positive cells) and alpha-cells (glucagon-positive cells) (at protein level). Specifically expressed in pancreas, small intestine and colon (PubMed:20148032). Expressed in endocrine cells in the islets (PubMed:25497100).

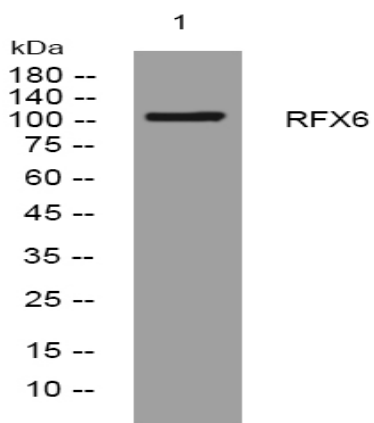
Sort : 14424

No4 : 1

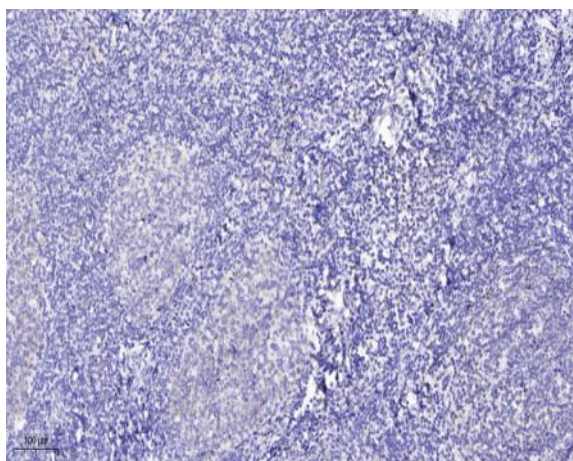
Host : Rabbit

Modifications : Unmodified

Products Images



Western blot analysis of lysates from SH-SY5Y cells, primary antibody was diluted at 1:1000, 4° over night



Immunohistochemical analysis of paraffin-embedded human tonsil. 1, Antibody was diluted at 1:200(4° overnight). 2, Tris-EDTA,pH9.0 was used for antigen retrieval. 3,Secondary antibody was diluted at 1:200(room temperature, 45min).